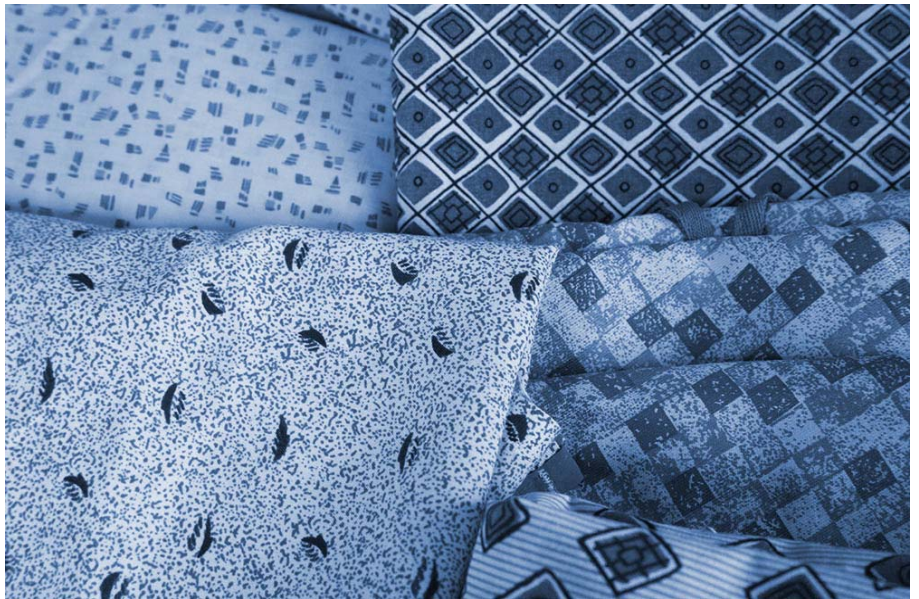




CENTRAL OHIO MEDICAL TEXTILES



MANUAL FOR

STANDARD LINEN CATALOG

AUTHORIZED BY: CUSTOMER COMMITTEE



CENTRAL OHIO MEDICAL TEXTILES

STANDARD LINEN CATALOG

TABLE OF CONTENTS

GENERAL LINEN

<i>Item No.</i>	<i>Item Name</i>
1010	Sheet, Flat
1020	Sheet, Knitted Fitted
1021	Sheet, Knitted Fitted (Folded)
1022	Bariatric Knitted Fitted Sheet
1050	Pillowcase
1060	Pads, Mattress (Lifter)
1080	Blanket, Bath
1100	Blanket, Spread (Thermal)
1110	Towel, Bath
1120	Towel, Hand
1121	Towel, Fitness
1130	Cloth, Wash
1131	Cloth, Wash (Stacked)
1140	Pad, Incontinent
1141	Bariatric Wound Care Pad
1150	Gown, Patient IV (Sleeve Snaps)
1152	Gown, Patient 5XL IV
1160	Gown, Patient
1170	Gown, Patient 10XL IV
1171	Gown, Patient 10XL
1180	Gown, Cover
1190	Gown, Maternity
1211	Pant, Adult PJ, Large
1212	Pant, Adult PJ, XL
1213	Pant, Adult PJ, XXXL
1214	Pant, Adult PJ, 5XL, No Snap
1220	Gown, Elopement
1250	Robe, Patient
1300	Towel, Dish
1350	Blue Rags (Bag)

1375	Blue Rags (Stacked)
1400	Sheet, Stretcher
1401	Sheet, Stretcher (Folded)
1500	Aid, Patient
6100	Flat Microfiber Mop
6500	Microfiber String Mop
6501	Microfiber Rag, Yellow
6502	Microfiber Rag, Green
6505	Microfiber Rag, Green (Stacked)
6506	Microfiber Rag, Yellow (Stacked)

PEDIATRIC LINEN

<i>Item No.</i>	<i>Item Name</i>
3100	Bassinet Sheet
3150	Blanket, Baby
3160	Snap Shirt, Baby
3170	Burpee, Baby
3181	Gown, Pediatric IV, 2-4
3182	Gown, Pediatric IV, 4-6
3183	Gown, Pediatric IV, 6-8
3200	Gown, Teen IV
3201	Gown, Teen Patient
3300	Sleep Sack
3301	Sleep Sack, Premie

O.R. LINEN

<i>Item No.</i>	<i>Item Name</i>
5010	18" O.R. Wrapper
5020	24" O.R. Wrapper
5060	Towel, O.R. White
5080	Sheet, Draw



CENTRAL OHIO MEDICAL TEXTILES

5100	Sheet, Circumcision
5110	Drape, Wound
5120	Drape, Single
5200	Level 3 Gown, S
5201	Level 3 Gown, L
5203	Level 4 Gown, S
5204	Level 4 Gown, L/XL
5205	Level 4 Gown, XXL/XXXL
5206	Level 3 Gown, XL
5207	Level 3 Gown, XXXL
5250	Yellow Isolation Gown
5304	Towel, O.R. Green
5401	30" O.R. Wrapper
5403	45" O.R. Wrapper
5501	Shirt, Scrub XS
5502	Shirt, Scrub S
5503	Shirt, Scrub M
5504	Shirt, Scrub L
5505	Shirt, Scrub XL
5506	Shirt, Scrub XXL
5507	Shirt, Scrub XXXL
5508	Shirt, Scrub XXXXL
5509	Shirt, Scrub XXXXXL
5601	Pants, Scrub XS
5602	Pants, Scrub S
5603	Pants, Scrub M
5604	Pants, Scrub L
5605	Pants, Scrub XL
5606	Pants, Scrub XXL
5607	Pants, Scrub XXXL
5608	Pants, Scrub XXXXL
5609	Pants, Scrub XXXXXL
6010	Hamper Bag, White - Surgical
6040	Hamper Bag, Green
6602	Warm-Up Jacket, Medium
6604	Warm-Up Jacket, XL
6606	Warm-Up Jacket, XXXL



CENTRAL OHIO MEDICAL TEXTILES

STANDARD LINEN CATALOG

QUALITY CONTROL STANDARDS

DEFINITIONS

Accordion Wrinkles

Consecutive pleating of wrinkles

Discoloration

Color that goes beyond the normal color of the textile

Hem

Is the edge of the linen which is sewn double ply to increase the strength

Holes

Small cuts, rips, or tears in linen

Patient Area

The area where a patient comes into physical contact with the linen

Selvage Edge

It is the edge of the linen that is not sewn (for example, the long side of our current flat sheet)

Snags

Pulls, strands of yarn or thread that are loose from the established weave

Stains

Are light or pale discolorations in the linen



CENTRAL OHIO MEDICAL TEXTILES

STANDARD LINEN CATALOG

GENERAL LINEN

<i>Item No.</i>	<i>Item Name</i>	<i>Item No.</i>	<i>Item Name</i>
1010	Sheet, Flat	1190	Gown, Maternity
1020	Sheet, Knitted Fitted	1211	Pant, Adult PJ, Large
1021	Sheet, Knitted Fitted (Folded)	1212	Pant, Adult PJ, XL
1022	Bariatric Knitted Fitted Sheet	1213	Pant, Adult PJ, XXXL
1050	Pillowcase	1214	Pant, Adult PJ, 5XL, No Snap
1060	Pads, Mattress (Lifter)	1220	Gown, Elopement
1080	Blanket, Bath	1250	Robe, Patient
1100	Blanket, Spread (Thermal)	1300	Towel, Dish
1110	Towel, Bath	1350	Blue Rags (Bag)
1120	Towel, Hand	1375	Blue Rags (Stacked)
1121	Towel, Fitness	1400	Sheet, Stretcher
1130	Cloth, Wash	1401	Sheet, Stretcher (Folded)
1131	Cloth, Wash (Stacked)	1500	Aid, Patient
1140	Pad, Incontinent	6100	Flat Microfiber Mop
1141	Bariatric Wound Care Pad	6500	Microfiber String Mop
1150	Gown, Patient IV (Sleeve Snaps)	6501	Microfiber Rag, Yellow
1152	Gown, Patient 5XL IV	6502	Microfiber Rag, Green
1160	Gown, Patient	6505	Microfiber Rag, Green (Stacked)
1170	Gown, Patient 10XL IV	6506	Microfiber Rag, Yellow (Stacked)
1171	Gown, Patient 10XL		
1180	Gown, Cover		

STANDARD LINEN CATALOG

CATALOG NO(S): **1010**

ITEM NAME: **Flat Sheet**

Item Details / Description

- 1" hems at each end
- All edges must be finished
- Use shrink-resistant thread
- Manufacturer's label to be attached

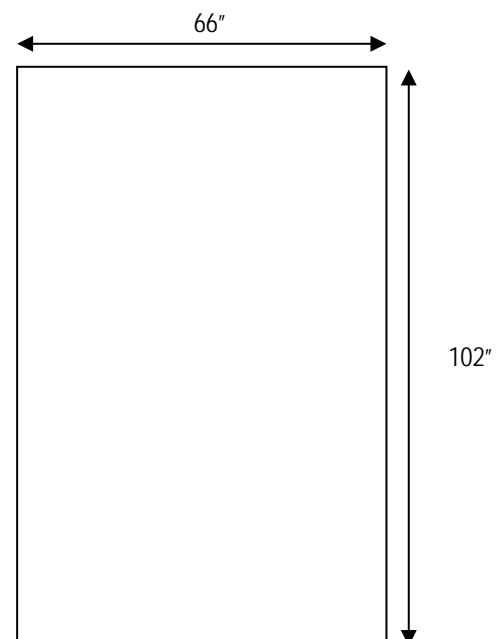
Size: 66" x 104" cut; 66" x 102" finished

Color: White

Weight: 1.1 lbs.

Material: Polyester/Cotton Blend 55/45

Thread Count: Min. 180 tpi



QUALITY CONTROL STANDARD	
Acceptable	Unacceptable
<ul style="list-style-type: none"> • Three holes, the size of a dime, within three inches of the selvage edge • Three stains, the size of a dime, within three inches from the selvage edge • One tear across width of hem per side 	<ul style="list-style-type: none"> • Discoloration • Holes in patient area • Stains in the patient area • Stains or holes along the hem of the sheet • An accordion wrinkle effect • Any foreign tape or textured items attached to the sheet • Thin sheets that are opaque



CENTRAL OHIO MEDICAL TEXTILES

STANDARD LINEN CATALOG

CATALOG NO(S): **1020, 1021**

ITEM NAME: **Knitted Fitted Sheet**

Item Details / Description

- Will retain size during washing
- Shrink-resistant thread
- Manufacturer's label to be attached
- Pockets to be 15" deep

Must fit all mattress sizes specified below,
minimum and maximum measurements:

Width: 31"

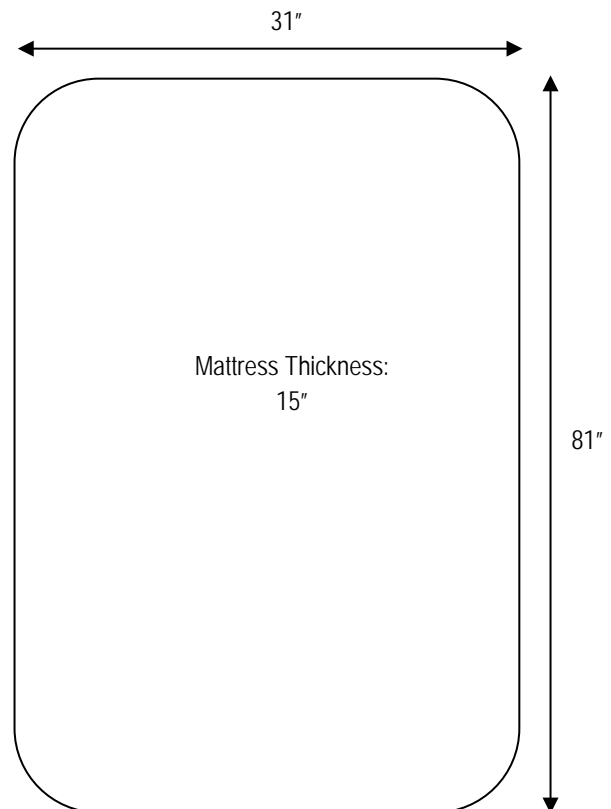
Length: 81"

Thickness: 15"

Color: White

Weight: 1.3 lbs.

Material: 100% Poly



QUALITY CONTROL STANDARD

Acceptable	Unacceptable
<ul style="list-style-type: none">• Light stains up to three inches in length in the pocket or corner• Holes that are three inches from the edge within the corner area• Three small holes of one inch or less along any of the edges	<ul style="list-style-type: none">• Holes and stains in the patient area• Thin sheets are not acceptable• Discoloration• Any foreign tape or textured items



CENTRAL OHIO MEDICAL TEXTILES

STANDARD LINEN CATALOG

CATALOG NO(S): **1022**

ITEM NAME: **Bariatric Knitted Fitted Sheet**

Item Details / Description

- Will retain size during washing
- Shrink-resistant thread
- Manufacturer's label to be attached
- Pockets to be 15" deep

Must fit all mattress sizes specified below,
minimum and maximum measurements:

Width: 48"

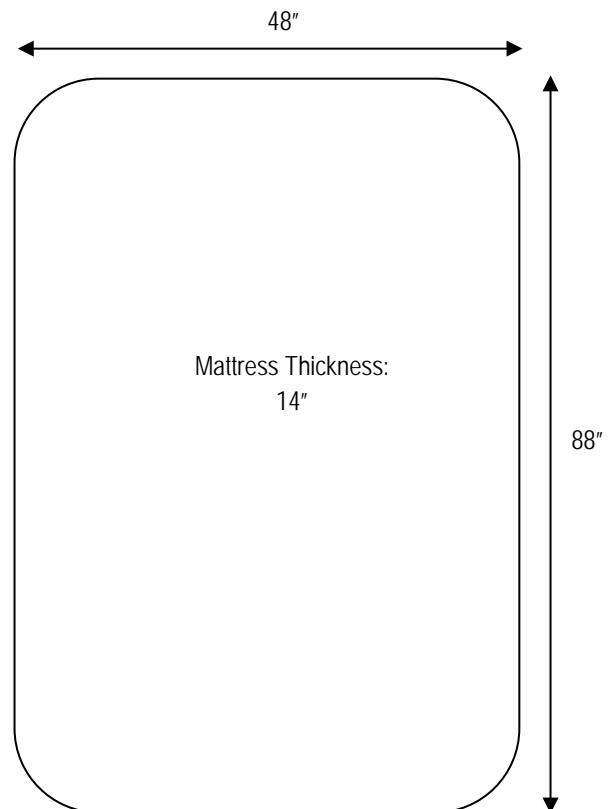
Length: 88"

Thickness: 14"

Color: White

Weight: 1.3 lbs.

Material: 100% Poly



QUALITY CONTROL STANDARD	
Acceptable	Unacceptable
<ul style="list-style-type: none">• Light stains up to three inches in length in the pocket or corner• Holes that are three inches from the edge within the corner area• Three small holes of one inch or less along any of the edges	<ul style="list-style-type: none">• Holes and stains in the patient area• Thin sheets are not acceptable• Discoloration• Any foreign tape or textured items

STANDARD LINEN CATALOG

CATALOG NO(S): **1050**

ITEM NAME: **Pillowcase**

Item Details / Description

- All edges must be finished
- Use shrink-resistant thread
- Manufacturer's label to be attached
- 2" hem at opening (12 stitches/inch)
- Single seam

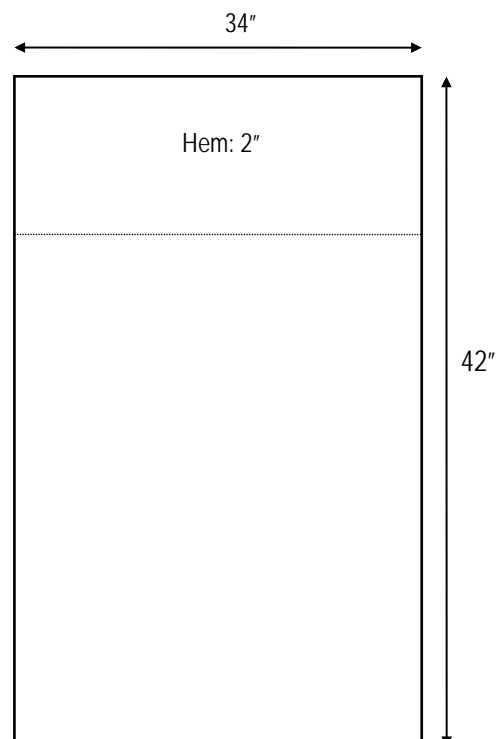
Size: 34" x 42"

Color: White

Weight: 0.2 lbs.

Material: Polyester/Cotton Blend 50/50, 45/55, 70/30 or 55/45

Thread Count: Min. 180 tpi



QUALITY CONTROL STANDARD	
Acceptable	Unacceptable
	<ul style="list-style-type: none">• Holes and stains• Discoloration• Accordion wrinkles

STANDARD LINEN CATALOG

CATALOG NO(S): **1060**

ITEM NAME: **Mattress (Lifter) Pads**

Item Details / Description

- All edges to be finished
- Use shrink-resistant thread
- Manufacturer's label to be attached

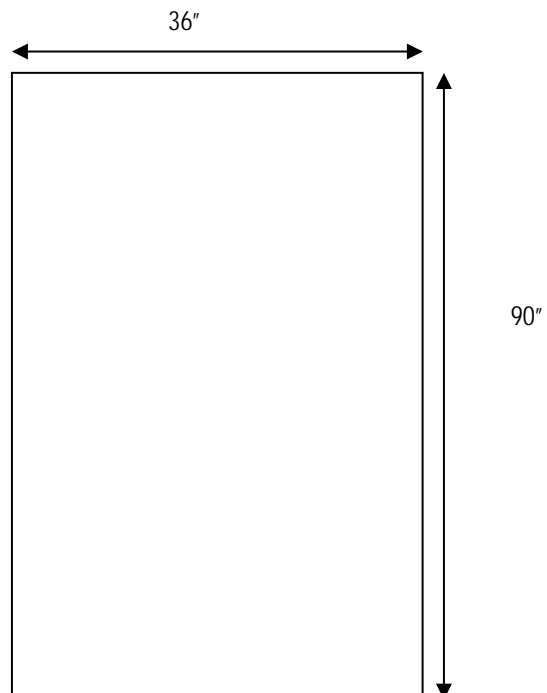
Size: 36" x 90"

Color: Bleached White

Weight: 1.70 lbs.

Material: 50%, 50% napped felt

Thread Count: Min. 130 tpi



STANDARD LINEN CATALOG

CATALOG NO(S): **1080**

ITEM NAME: **Bath Blanket**

Item Details / Description

- All edges must be finished
- Use shrink-resistant thread
- Manufacturer's label to be attached

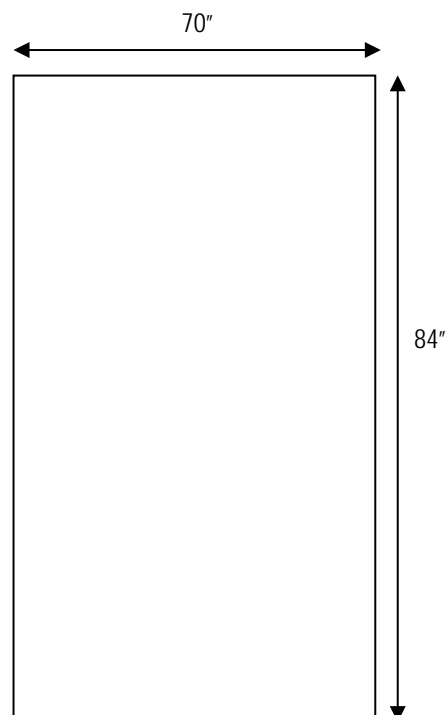
Size: 70" x 84"

(72" x 90" before washing)

Color: Unbleached White

Weight: 1.5 lbs.

Material: Polyester/Cotton Blend 80/20



QUALITY CONTROL STANDARD	
Acceptable	Unacceptable
<ul style="list-style-type: none">• Three stains the size of a dime within the hem• One tear across width of hem per side	<ul style="list-style-type: none">• Holes and stains in the patient area• Any foreign tape or textured items• Rips or holes beyond the hem• Accordion wrinkles• Thin blankets with visible thread counts

STANDARD LINEN CATALOG

CATALOG NO(S): **1100**

ITEM NAME: **Thermal Spread Blanket**

Item Details / Description

- Spread to be of a woven pattern
- All edges must be finished
- Use shrink-resistant thread
- Manufacturer's label to be attached
- Snag-free
- Tight weave

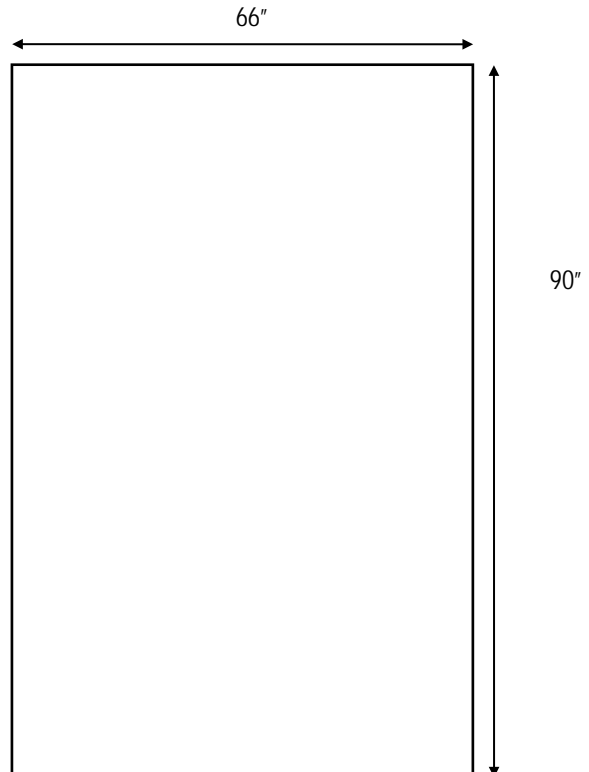


Size: Min. 66" x 90" (after washing)

Color: Unbleached White

Weight: 2.4 lbs.

Material: Polyester or Cotton Blend 50% - 50% Blend Preferred



QUALITY CONTROL STANDARD	
Acceptable	Unacceptable
<ul style="list-style-type: none">• Three stains the size of a dime within the hems• One tear across width of hem per side• One two-inch long pull or snag per foot	<ul style="list-style-type: none">• Holes and stains in the patient area• Any foreign tape or textured items attached to the blanket• Rips or holes beyond the hem• Accordion wrinkles• Thin blankets with visible thread counts• One pull or snag per foot

STANDARD LINEN CATALOG

CATALOG NO(S): **1110**

ITEM NAME: **Bath Towel**

Item Details / Description

- All edges must be finished
- Use shrink-resistant thread
- Manufacturer's label to be attached

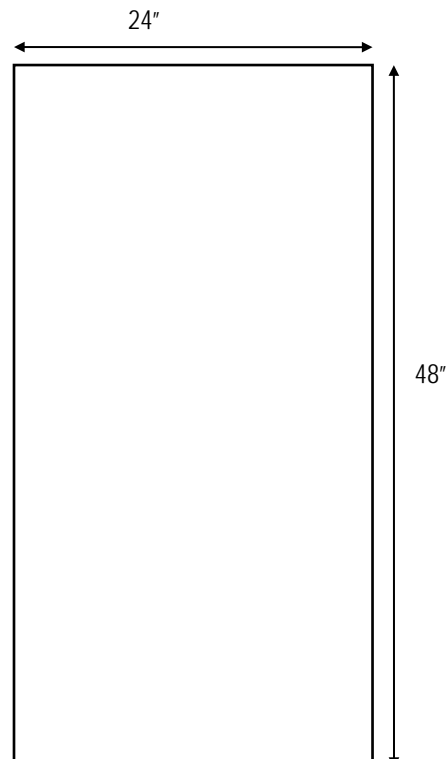


Size: 24" x 48"

Color: White

Weight: 0.5311 lbs.

Material: Terry Toweling, 84% - 16% Blend
Cotton Preferred



QUALITY CONTROL STANDARD	
Acceptable	Unacceptable
<ul style="list-style-type: none">• One half-inch pull or snag along the hem of each side• One tear across width of hem per side	<ul style="list-style-type: none">• Any foreign tape or textured items attached• Rips or holes beyond the hem• Thin towels that have visible thread counts• Discoloration



CENTRAL OHIO MEDICAL TEXTILES

STANDARD LINEN CATALOG

CATALOG NO(S): **1120**

ITEM NAME: **Hand Towel**

Item Details / Description

- All edges must be finished
- Use shrink-resistant thread
- Manufacturer's label to be attached

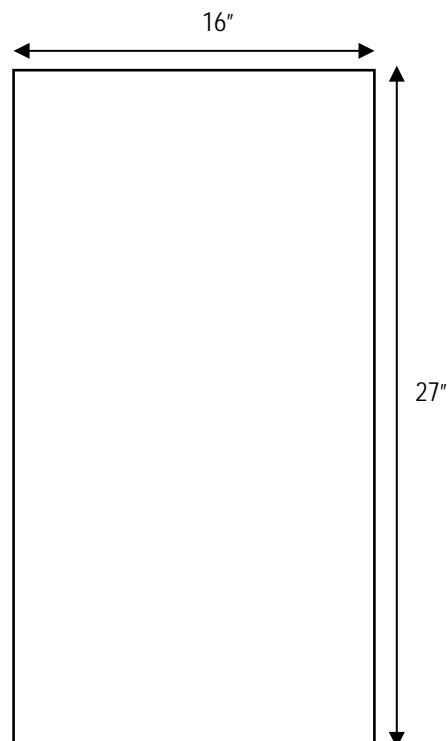


Size: 16" x 27"

Color: White

Weight: 0.2 lbs.

Material: Terry Toweling, 86% - 14% Blend
Cotton Preferred



QUALITY CONTROL STANDARD	
Acceptable	Unacceptable
<ul style="list-style-type: none">• One half-inch pull or snag along the hem of each side• One tear across width of hem per side	<ul style="list-style-type: none">• Holes or stains in the patient area• Discoloration• Any foreign tape or textured items attached• Thin towels that have visible thread counts

STANDARD LINEN CATALOG

CATALOG NO(S): **1121**

ITEM NAME: **Fitness Towel**

Item Details / Description

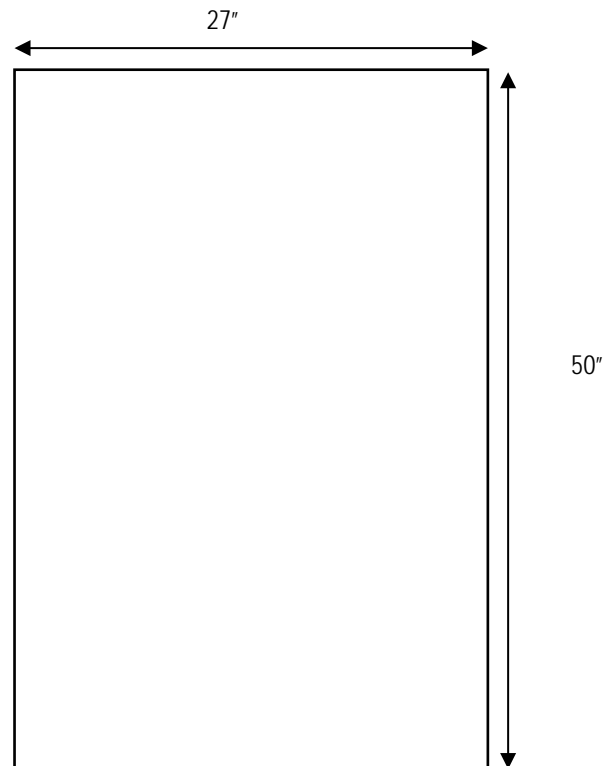
- All edges must be finished
- Use shrink-resistant thread
- Manufacturer's label to be attached

Size: 27" x 50"

Color: White

Weight: 1.1 lbs.

Material: Terry Toweling, 100% Cotton



QUALITY CONTROL STANDARD	
Acceptable	Unacceptable
<ul style="list-style-type: none"> • One half-inch pull or snag along the hem of each side • One tear across width of hem per side 	<ul style="list-style-type: none"> • Stains are not acceptable inside the body of the towel • Any foreign tape or textured items attached • Rips or holes beyond the hem • Thin towels that have visible thread counts • Discoloration

STANDARD LINEN CATALOG

CATALOG NO(S): **1130, 1131**

ITEM NAME: **Wash Cloth**

Item Details / Description

- Edges must be finished to prevent fraying after washing
- Use shrink-resistant thread
- Manufacturer's label to be attached



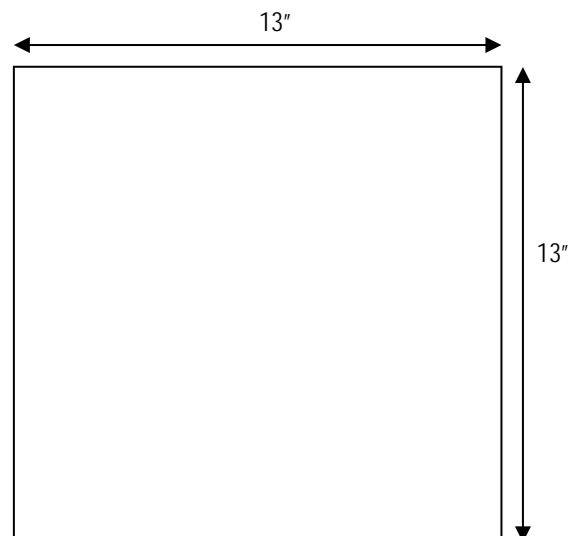
Size: 13" x 13"

Color: White

Weight: 0.0703 lbs.

Material: Terry Toweling, - Prefer Blended Product

QUALITY CONTROL STANDARD	
Acceptable	Unacceptable
<ul style="list-style-type: none">• One half-inch pull or snag along the hem of each side• One tear across width of hem per side	<ul style="list-style-type: none">• Stains or holes• Discoloration





CENTRAL OHIO MEDICAL TEXTILES

STANDARD LINEN CATALOG

CATALOG NO(S): **1140**

ITEM NAME: **Incontinent Pad**

Item Details / Description

- All edges must be finished
- Use shrink-resistant thread (periphery sewn overlock 4 thread)
- Manufacturer's label to be attached
- Absorbency – minimum 1,000 cc

Size: 34" x 36"

Color: Blue

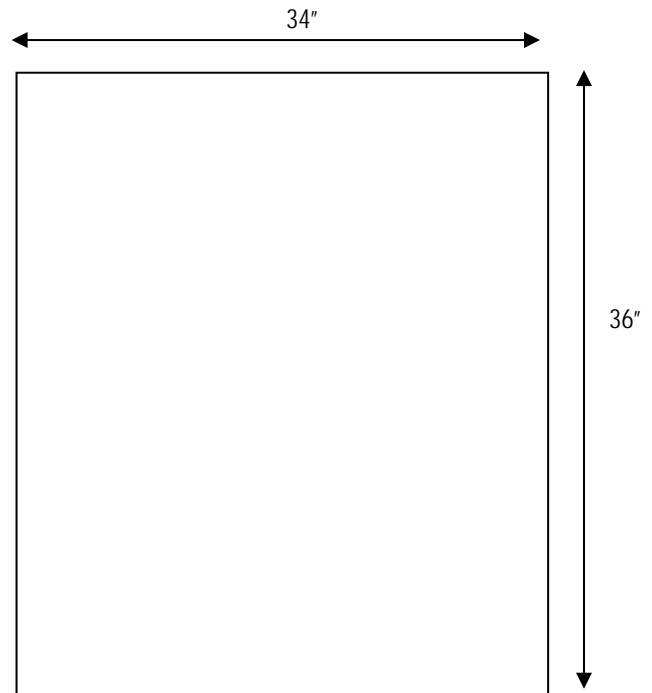
Weight: 1.08 lbs.

Material: Three Layers:

Surface Layer: 100% Polyester quilted honeycomb design quilted to absorbent layer; Thread count – 49 x 33; Weight – 5.6 oz./sq. yd.

Absorbent Layer: 65% Polyester, 35% Rayon; Needled, non-woven, heat-set; high compression; Weight – 7 oz./sq. yd.

Barrier Layer: Vinyl film extruded to polyester knit; Resistant to wicking



QUALITY CONTROL STANDARD	
Acceptable	Unacceptable
<ul style="list-style-type: none">• Three dime size stains and holes within one inch of the patient side border• Light stains on the barrier of the pad	<ul style="list-style-type: none">• No holes on the barrier side of the pad• Any foreign tape or textured items attached

STANDARD LINEN CATALOG

CATALOG NO(S): **1141**

ITEM NAME: **Bariatric Wound Care Pad**

Item Details / Description

- All edges must be finished
- Rounded corners
- Laminated with PU barrier
- Brushed polyester



Size: 34" x 45"

Color: Blue/Green

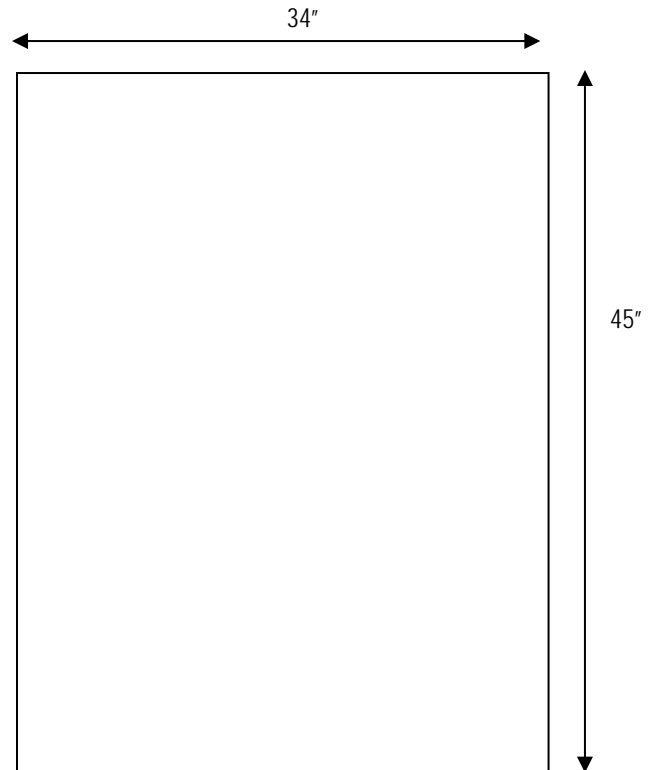
Weight: 1.1 lbs.

Material: Three Layers:

Surface Layer: 100% brushed tricot warp-knit Polyester

Absorbent Layer: 80% Polyester, 20% Rayon needle-punched nonwoven

Barrier Layer: 100% brushed tricot warp-knit Polyester with polyurethane film lamination



QUALITY CONTROL STANDARD	
Acceptable	Unacceptable
<ul style="list-style-type: none"> • Three dime size stains and holes within one inch of the patient side border • Light stains on the barrier of the pad 	<ul style="list-style-type: none"> • No holes on the barrier side of the pad • Any foreign tape or textured items attached

STANDARD LINEN CATALOG

CATALOG NO(S): **1150**

ITEM NAME: **Patient I.V. Gown (Sleeve Snaps)**

Item Details / Description

- Use shrink-resistant thread
- All edges to be finished
- Manufacturer's label to be attached
- Overlapping shoulder section – fastening at back with ties
- 4-1/2" x 6" pocket with lead hold on right chest
- Back ties: 1 set at neck, 1 set at waist to allow 6" overlap, 1 extra tie at waist
- 4 sets of snaps down along the sleeves



Size: Center Front to Bottom – 51"

Under Arm to Bottom – 34"

Under Arm to Cuff – 6"

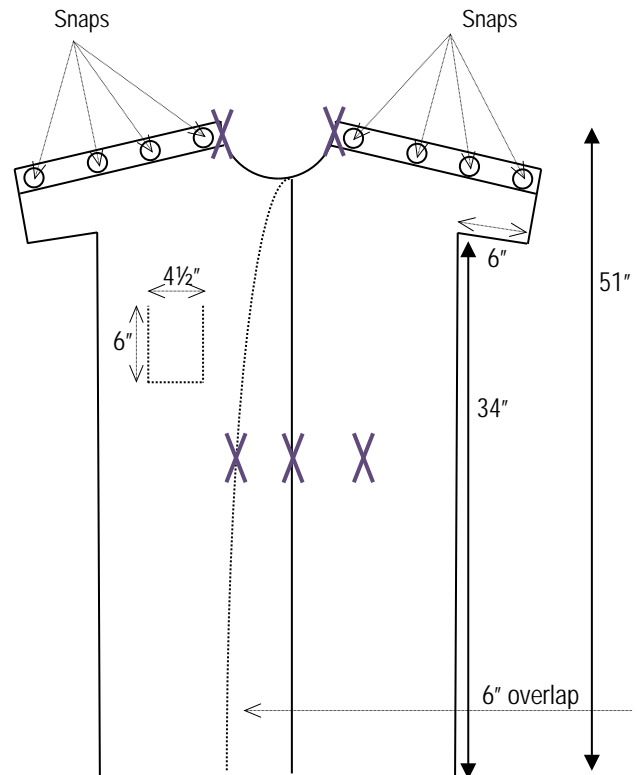
Sweep – 80"

Color: Mauve/Patterned

Weight: 0.8 lbs.

Material: Polyester/Cotton 55/45

X - Shows placement of ties



QUALITY CONTROL STANDARD	
Acceptable	Unacceptable
<ul style="list-style-type: none"> • Torn hems; no more than one inch along the bottom hem • Snaps must be in working order • All ties must be functional; no less than eight inches 	<ul style="list-style-type: none"> • Stains or holes • Any foreign tape or textured items attached • No tears along the sleeves or pockets



CENTRAL OHIO MEDICAL TEXTILES

STANDARD LINEN CATALOG

CATALOG NO(S): **1152**

ITEM NAME: **5XL IV Patient Gown**

Item Details / Description

- Use shrink-resistant thread
- All edges to be finished
- Manufacturer's label to be attached



X - Shows placement of ties

Size: Center back length – 48"

Under Arm to Sleeve Hem – 7"

Top of Shoulder to Hem – 19.5"

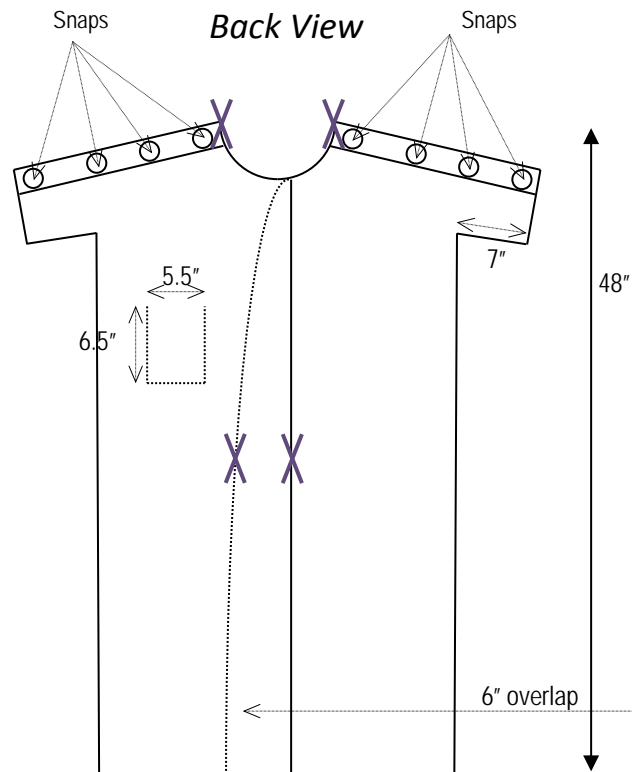
Sweep – 87"

Pocket size – 6.5" L x 5.5" W

Color: Blue/Patterned

Weight: 0.984 lbs.

Material: Polyester/Cotton 50/50 or 55/45



QUALITY CONTROL STANDARD

Acceptable

- Torn hems; no more than one inch along the bottom hem
- Snaps must be in working order
- All ties must be functional; no less than eight inches

Unacceptable

- Stains or holes
- Any foreign tape or textured items attached
- No tears along the sleeves or pockets



CENTRAL OHIO MEDICAL TEXTILES

STANDARD LINEN CATALOG

CATALOG NO(S): **1160**

ITEM NAME: **Patient Gown**

Item Details / Description

- All edges must be finished with shrink-resistant thread
- Manufacturer's label to be attached
- Back ties: Cotton twill tape min. 12" length after washing; 1 set at neck, 1 set at waist to allow 6" overlap



X - Shows placement of ties

Size: Neck Band – 24"

Center Front to Bottom Hem – 51"

Under Arm to Bottom Hem – 34"

Under Arm to Cuff End – 4"

Sweep – 80"

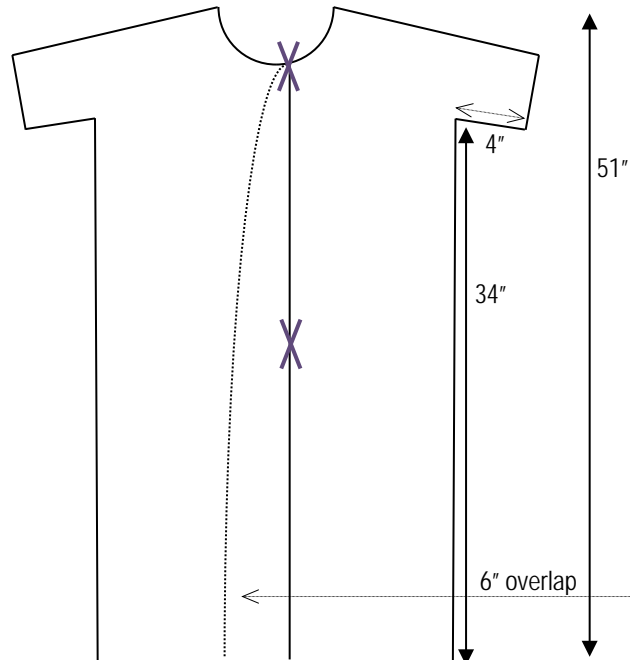
Overlap of Back Closure – 6"

Color: Blue/patterned

Weight: 0.7 lbs.

Material: Polyester/Cotton Blend 55/45

Thread Count: Min. 164 tpi



QUALITY CONTROL STANDARD	
Acceptable	Unacceptable
<ul style="list-style-type: none">• All ties must be functional; no less than 8 inches• Torn hems; no more than one inch along the bottom hem	<ul style="list-style-type: none">• Stains or holes• Any foreign tape or textured items attached• No tears along the sleeves

STANDARD LINEN CATALOG

CATALOG NO(S): **1170**

ITEM NAME: **10XL IV Patient Gown**

Item Details / Description

- Use shrink-resistant thread
- All edges must be finished
- Manufacturer's label to be attached
- 4-1/2" x 6" pocket with lead hold on right chest
- Back Ties: Cotton twill min. 12" length after washing, bartacked to garment; 1 set at waist, 1 set at neck
- 4 sets of snaps down along the sleeves



X - Shows placement of ties

Size: Neck Band – 22"

Center Front to Bottom Hem – 54"

Under Arm to Bottom Hem – 34"

Under Arm to Cuff – 6"

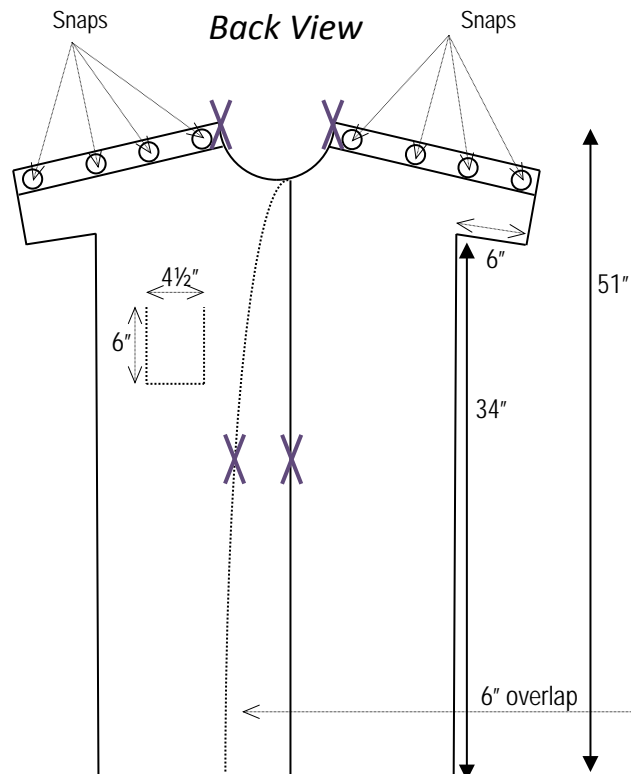
Sweep – 104"

Color: Tan/Patterned

Weight: 1.3 lbs.

Material: Polyester/Cotton 55/45

Thread Count: Min. 160 tpi



QUALITY CONTROL STANDARD	
Acceptable	Unacceptable
<ul style="list-style-type: none"> • Torn hems; no more than one inch along the bottom hem • Snaps must be in working order • All ties must be functional; no less than eight inches 	<ul style="list-style-type: none"> • Stains or holes • Any foreign tape or textured items attached • No tears along the sleeves or pockets



CENTRAL OHIO MEDICAL TEXTILES

STANDARD LINEN CATALOG

CATALOG NO(S): **1171**

ITEM NAME: **10XL Patient Gown**

Item Details / Description

- Use shrink-resistant thread
- All edges to be finished
- Manufacturer's label to be attached
- Back Ties: Cotton twill min. 12" length after washing, bar-tacked to garment: 1 set at neck, 1 set at waist



X - Shows placement of ties

Size: Neck Band – 22"

Center Front to Bottom Hem – 54"

Under Arm to Bottom Hem – 34"

Under Arm to Cuff – 6"

Sweep – 104"

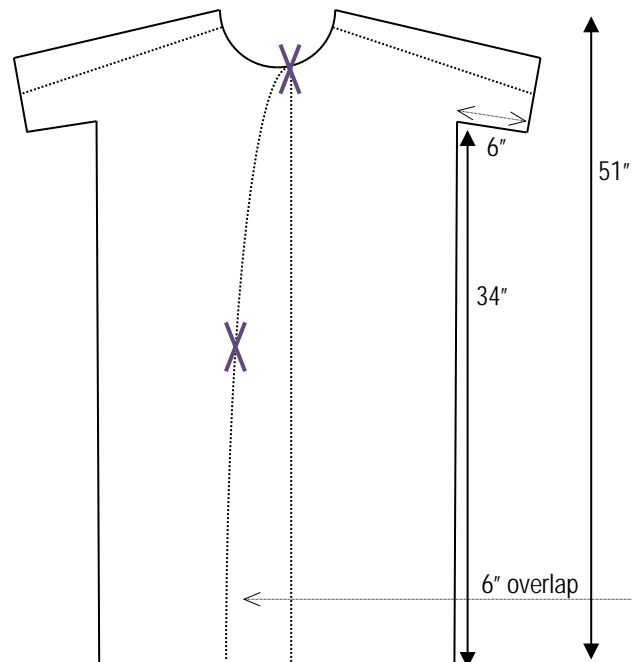
Color: Light Green/Patterned

Weight: 1.1 lbs.

Material: Polyester/Cotton 55/45

Thread Count: Min. 160 tpi

Back View



QUALITY CONTROL STANDARD

Acceptable	Unacceptable
<ul style="list-style-type: none">• Torn hems; no more than one inch along the bottom hem• All ties must be functional; no less than eight inches	<ul style="list-style-type: none">• Stains or holes• Any foreign tape or textured items attached• No tears along the sleeves

STANDARD LINEN CATALOG

CATALOG NO(S): **1180, 5250**

ITEM NAME: **Cover Gown / Yellow Isolation Gown**

Item Details / Description

- All edges must be finished with shrink-resistant thread
- Manufacturer's label to be attached
- Full-length with full raglan sleeves and knitted cuffs
- Two needle construction
- Liquid resistant



Size: Large

Neck Band – 23"

Center Front to Bottom Hem – 44"

Under Arm to Bottom Hem – 33"

Under Arm to Cuff End – 23"

Sweep – 58"

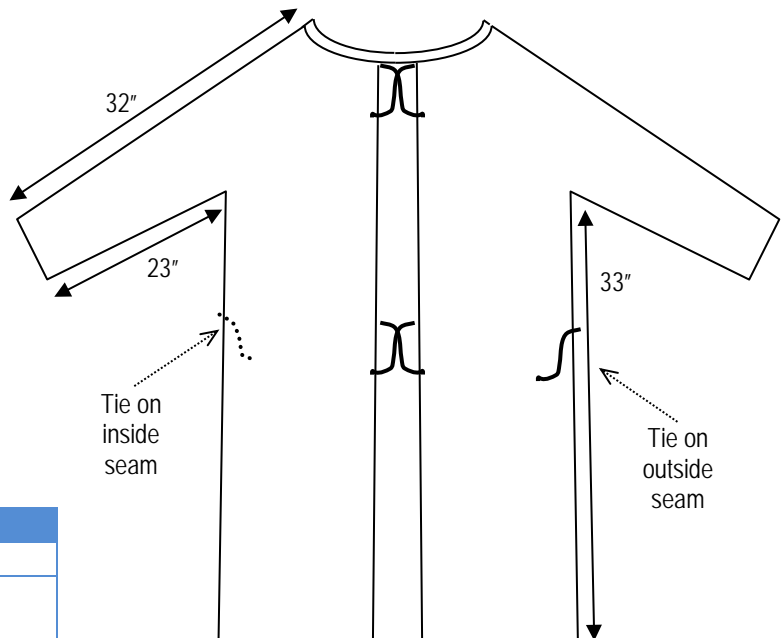
Cuff – 4"

Color: Yellow

Weight: 0.3 lbs.

Material: 99% Polyester, 1% Carbon Fiber
Calendared

Thread Count: Min. 243 tpi



QUALITY CONTROL STANDARD	
Acceptable	Unacceptable
<ul style="list-style-type: none"> • All ties must be functional; no less than eight inches 	<ul style="list-style-type: none"> • Stains or holes • Any foreign tape or textured items attached • Any discoloration



CENTRAL OHIO MEDICAL TEXTILES

STANDARD LINEN CATALOG

CATALOG NO(S): **1190**

ITEM NAME: **Maternity Gown**

Item Details / Description

- All edges must be finished with shrink-resistant thread
- Manufacturer's label to be attached
- Raglan sleeves hemmed
- Breast feeding openings
- Two pockets on front
- Back Ties: Cotton twill min. 12" length after washing, bar-tacked to garment: 2 sets at neck, 1 set at waist



Size: Neck Band – 26"

Center Front to Bottom Hem – 51"

Under Arm to Bottom Hem – 34"

Under Arm to Cuff – 6"

Sweep – 68"

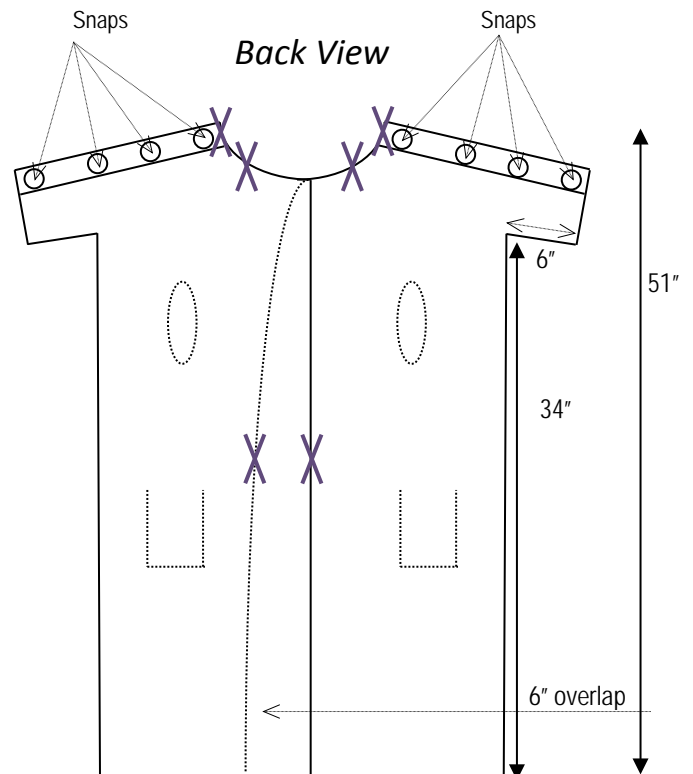
Color: Pink/Print

Weight: 0.8 lbs.

Material: Polyester/Cotton 50/50 or 65/35

Thread Count: Min. 160 tpi

X - Shows placement of ties



QUALITY CONTROL STANDARD

Acceptable	Unacceptable
<ul style="list-style-type: none">• Torn hems; no more than one inch along the bottom hem• All ties must be functional; no less than eight inches	<ul style="list-style-type: none">• Stains or holes• Any foreign tape or textured items attached• No tears along the sleeves or breastfeeding openings

STANDARD LINEN CATALOG

CATALOG NO(S).: **1211, 1212, 1213**

ITEM NAME: **Adult PJ Pant**

Item Details / Description

- Color-coded drawstring tie for identification purposes
- Drawstring waist



Size: 1211 – Large; 1212 – X-Large;
1213 – XXX-Large

Color: Printed

1211 – Large – white tie

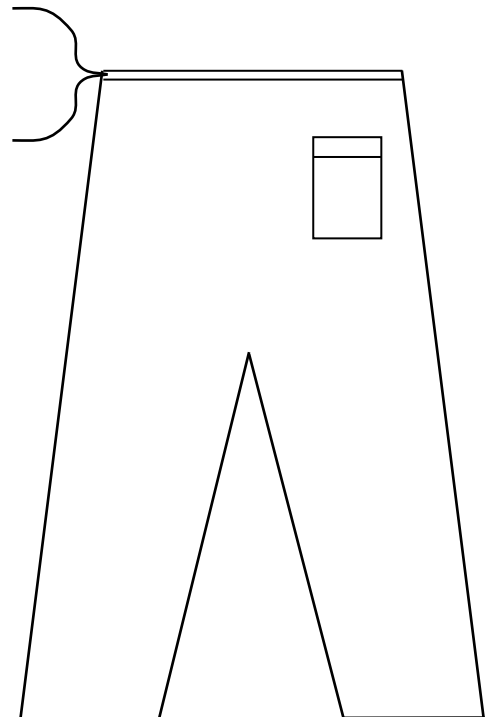
1212 – X-Large – navy blue tie

1213 – XXX-Large – burgundy tie

Weight: 1211 – 0.3 lbs.; 1212 – 0.4 lbs.;
1213 – 0.5 lbs.

Material: Polyester/Cotton Blend

Thread Count: Min. 150 tpi



QUALITY CONTROL STANDARD	
Acceptable	Unacceptable
<ul style="list-style-type: none"> • Torn hems; no more than one inch along the bottom hem • All ties must be functional; no less than eight inches 	<ul style="list-style-type: none"> • Stains or holes • Any foreign tape or textured items attached

STANDARD LINEN CATALOG

CATALOG NO(S): **1214**

ITEM NAME: **Adult PJ Pant, 5XL, No Snap**

Item Details / Description

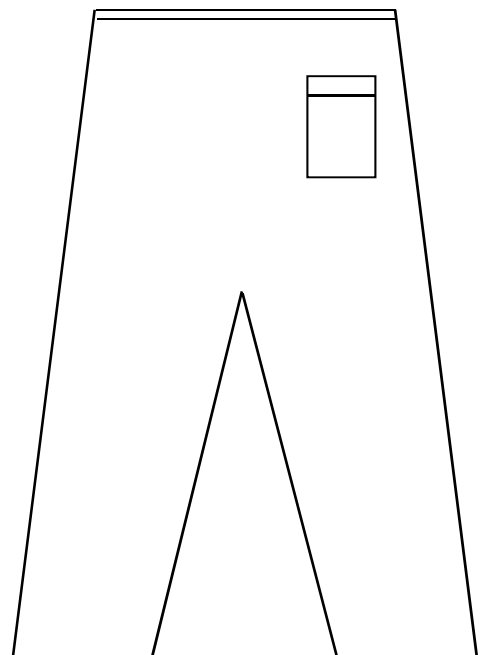
- Elastic waist

Color: Printed

Material: 55/45 Polyester/Cotton Blend

Measurements: 40" Length
24"-31" Waist
26" Inseam

Thread Count: Min. 150 tpi



QUALITY CONTROL STANDARD	
Acceptable	Unacceptable
<ul style="list-style-type: none"> • Torn hems; no more than one inch along the bottom hem • All ties must be functional; no less than eight inches 	<ul style="list-style-type: none"> • Stains or holes • Any foreign tape or textured items attached



CENTRAL OHIO MEDICAL TEXTILES

STANDARD LINEN CATALOG

CATALOG NO(S): **1220**

ITEM NAME: **Elopement Gown**

Item Details / Description

- Use shrink-resistant thread
- All edges to be finished
- Manufacturer's label to be attached



Three armhole wrap gown with no ties, snaps or fasteners

Size: Center Front to Bottom Hem – 51"

Under Arm to Bottom Hem – 34"

Under Arm to Cuff – 6"

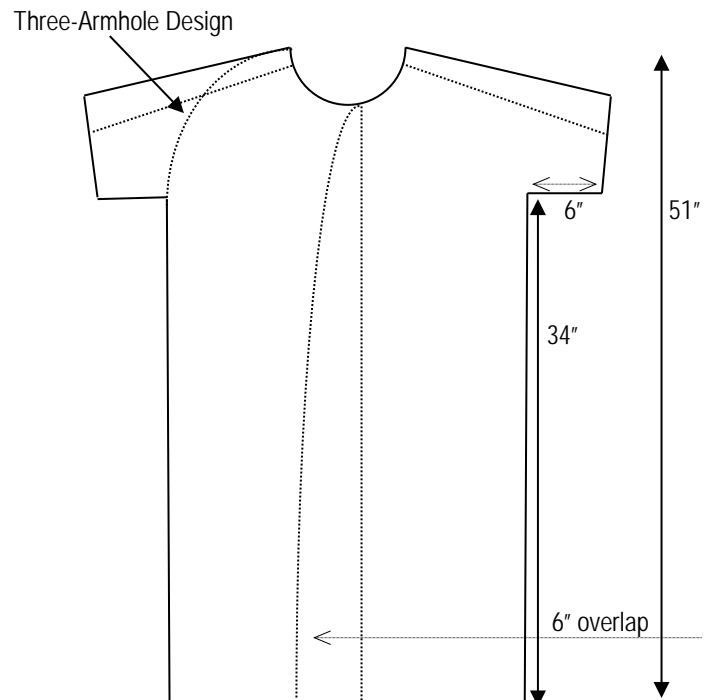
Color: Blueberry

Weight: 0.7 lbs.

Material: Polyester/Cotton Blend

Thread Count: Min. 150 tpi

Back View



QUALITY CONTROL STANDARD

Acceptable	Unacceptable
<ul style="list-style-type: none">• All ties must be functional; no less than 8 inches• Torn hems; no more than one inch along the bottom hem	<ul style="list-style-type: none">• Stains or holes• Any foreign tape or textured items attached• No tears along the sleeves

STANDARD LINEN CATALOG

CATALOG NO(S): **1250**

ITEM NAME: **Patient Robe**

Item Details / Description

- All edges must be finished
- Use shrink-resistant thread
- Manufacturer's label to be attached
- Belt to be attached across entire back
- Length of ties must be 23" each



Size: Large

Back Neck to Bottom Hem – 51"

Under Arm to Bottom Hem – 34"

Under Arm to Cuff End – 13.5"

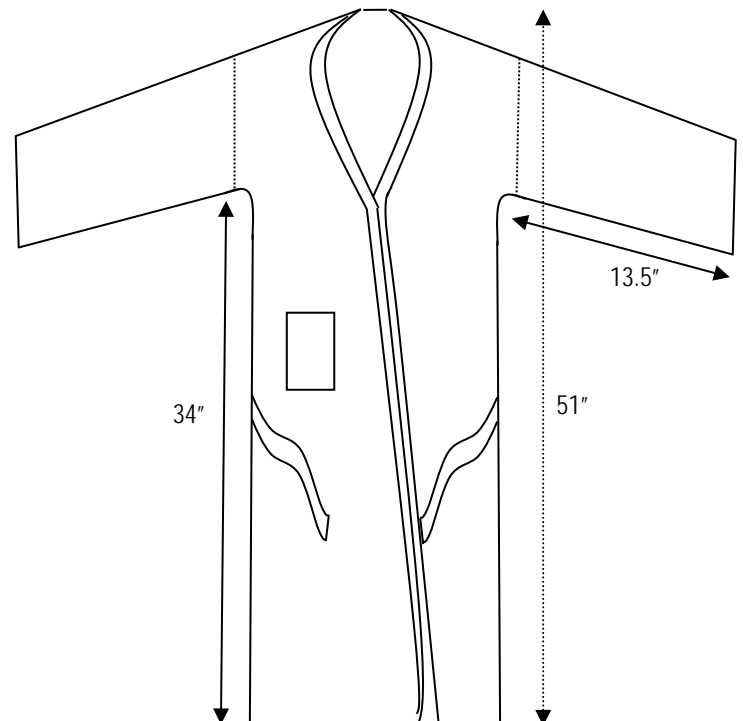
Sweep – 60"

Color: Blue with White Trim

Weight: 0.8 lbs.

Material: Rogue Poplin

Thread Count: Min. 140 tpi



QUALITY CONTROL STANDARD	
Acceptable	Unacceptable
<ul style="list-style-type: none"> • Torn hems; no more than one inch along the bottom hem • All ties must be functional; no less than eight inches 	<ul style="list-style-type: none"> • Stains or holes • Any foreign tape or textured items attached • Belt must be included and able to be tied • No tears along the sleeves or pockets



CENTRAL OHIO MEDICAL TEXTILES

STANDARD LINEN CATALOG

CATALOG NO(S): **1300**

ITEM NAME: **Dish Towel**

Item Details / Description

- Edges must be finished to prevent fraying after washing
- Use shrink-resistant thread
- Manufacturer's label to be attached



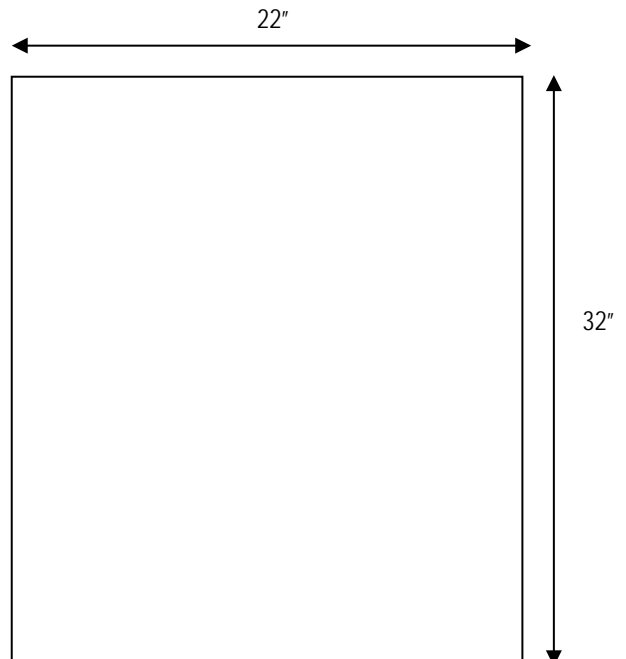
Size: 22" x 32"

Color: White or Multi-Color

Weight: 0.1 lbs.

Material: 100% Cotton

Thread Count: Min. 140 tpi



QUALITY CONTROL STANDARD	
Acceptable	Unacceptable
<ul style="list-style-type: none">• Three small dime-size stains are acceptable• Discoloration• Torn hems	

STANDARD LINEN CATALOG

CATALOG NO(S).: **1350, 1375**

ITEM NAME: **Blue Rags**

Item Details / Description

- All edges to be hemmed.

Size: Varies; about 15" x 22"

Color: Blue

Weight: Weight per each – 0.375 lbs.;
Bag – 15.6 lbs.



STANDARD LINEN CATALOG

CATALOG NO(S): **1400, 1401**

ITEM NAME: **Stretcher Sheet**

Item Details / Description

- Use shrink-resistant thread
- Manufacturer's label to be attached
- Elastic band or envelope enclosure



Size: Width: 28"

Length: 77"

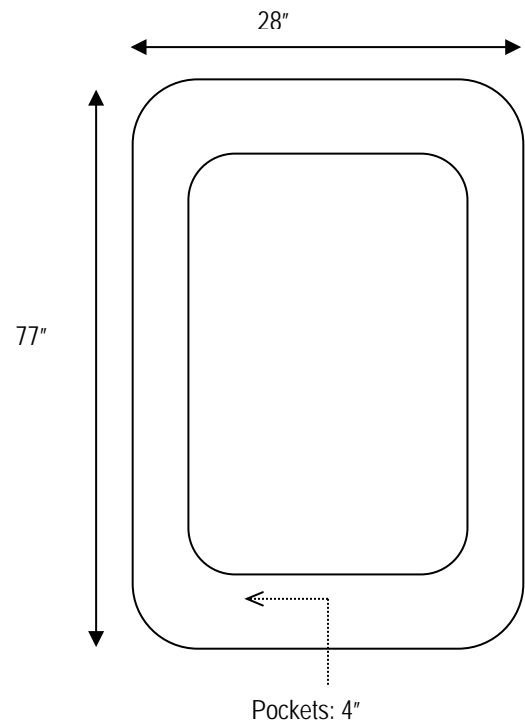
Pockets: 4"

Color: Misty Green/Blue

Weight: 1.1 lbs.

Material: 100% pleated polyester jersey

Thread Count: Min. 180 tpi



QUALITY CONTROL STANDARD	
Acceptable	Unacceptable
<ul style="list-style-type: none"> • Holes that are three inches from the edge within the corner • Light stains up to three inches in length in the pocket or corner • Three small holes of one inch or less along any of the edges 	<ul style="list-style-type: none"> • Holes or stains in the patient area • Thin sheets • Discoloration • Any foreign tape or textured items attached

STANDARD LINEN CATALOG

CATALOG NO(S): **1500**

ITEM NAME: **Patient Aid**

Item Details / Description

- Edges must be finished to prevent fraying after washing
- Use shrink-resistant thread
- Manufacturer's label to be attached
- 3-ply



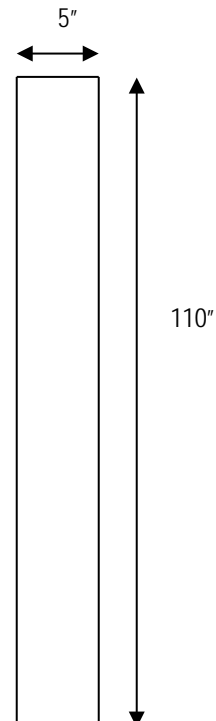
Size: One Size Fits All

Color: Misty Green

Weight: 0.3 lbs.

Material: Polyester/Cotton 50/50

Thread Count: Min. 180 tpi



QUALITY CONTROL STANDARD	
Acceptable	Unacceptable
	<ul style="list-style-type: none">• No stains or holes• Any foreign tape or textured items attached• No tears

STANDARD LINEN CATALOG

CATALOG NO(S): **6100**

ITEM NAME: **Flat Microfiber Mop**

Item Details / Description

- Manufacturer's label to be attached

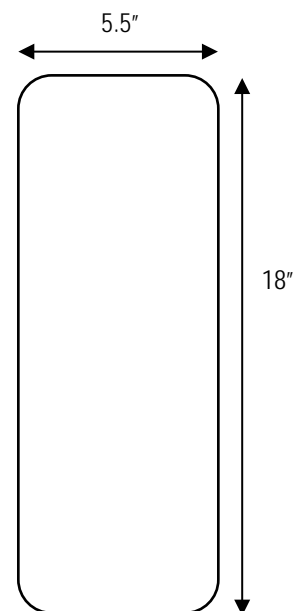
Size: 18" x 5.5"

Color: Green

Weight: 0.18 lbs.

Material: Microfiber

Thread Count: Min. 180



STANDARD LINEN CATALOG

CATALOG NO(S): **6500**

ITEM NAME: **Microfiber String Mop**

Item Details / Description

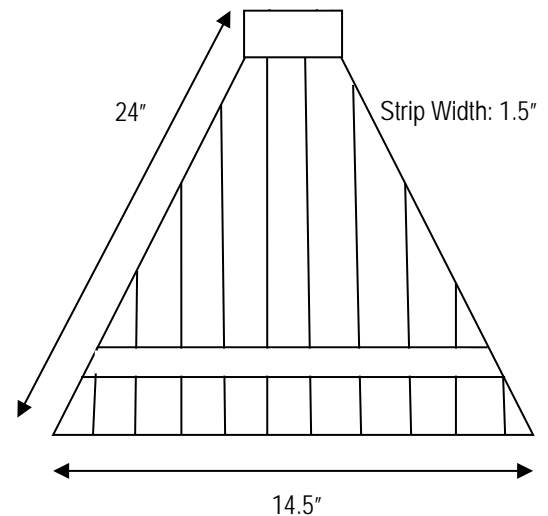
- Strip width – 1.5" with 27 strips per side

Size: 24" x 14.5"

Color: Blue

Weight: 0.59 lbs.

Material: Microfiber



STANDARD LINEN CATALOG

CATALOG NO(S): **6501, 6506**

ITEM NAME: **Microfiber Rag, Yellow**

Item Details / Description

- All edges to be finished
- Use shrink-resistant thread
- Contains a proprietary blend of synthetic fibers that do not deplete sanitizing solution



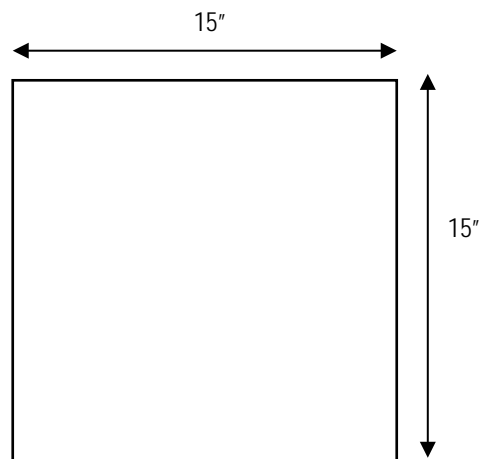
Size: 15" x 15"

Color: Yellow

Weight: 0.12 lbs.

Material: 100% Synthetic

Denier: 100% Microfiber



STANDARD LINEN CATALOG

CATALOG NO(S): **6502, 6505**

ITEM NAME: **Microfiber Rag, Green**

Item Details / Description

- All edges to be finished
- Use shrink-resistant thread
- Contains a proprietary blend of synthetic fibers that do not deplete sanitizing solution



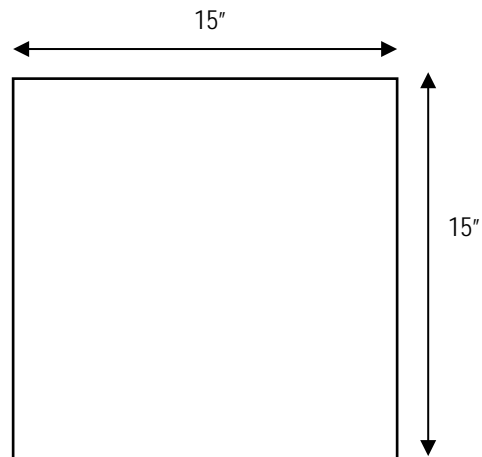
Size: 15" x 15"

Color: Green

Weight: 0.12 lbs.

Material: 100% Synthetic

Denier: 100% Microfiber





STANDARD LINEN CATALOG

PEDIATRIC LINEN

<i>Item No.</i>	<i>Item Name</i>
3100	Bassinet Sheet
3150	Blanket, Baby
3160	Snap Shirt, Baby
3170	Burpee, Baby
3181	Gown, Pediatric IV, 2-4
3182	Gown, Pediatric IV, 4-6
3183	Gown, Pediatric IV, 6-8
3200	Gown, Teen IV
3201	Gown, Teen Patient
3300	Sleep Sack
3301	Sleep Sack, Premie



CENTRAL OHIO MEDICAL TEXTILES

STANDARD LINEN CATALOG

CATALOG NO(S): **3100**

ITEM NAME: **Bassinnet Sheet**

Item Details / Description

- All edges to be finished
- Manufacturer's label to be attached
- Red binding

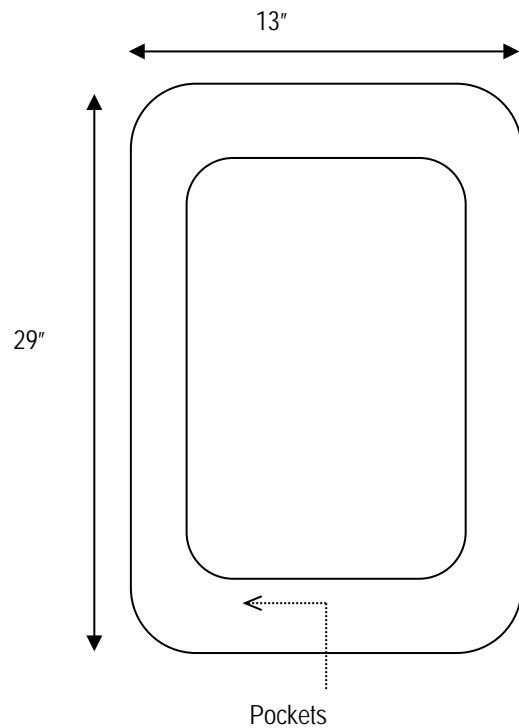


Size: 13" x 29"

Color: Jersey White

Weight: 0.1250 lbs.

Material: 60/40 Cotton/Poly



QUALITY CONTROL STANDARD	
Acceptable	Unacceptable
	<ul style="list-style-type: none">• Stains or holes• Discoloration• Accordion wrinkles• Any foreign tape or textured items attached

STANDARD LINEN CATALOG

CATALOG NO(S): **3150**

ITEM NAME: **Baby Blanket**

Item Details / Description

- All edges must be finished
- Use shrink-resistant thread
- Manufacturer's label to be attached



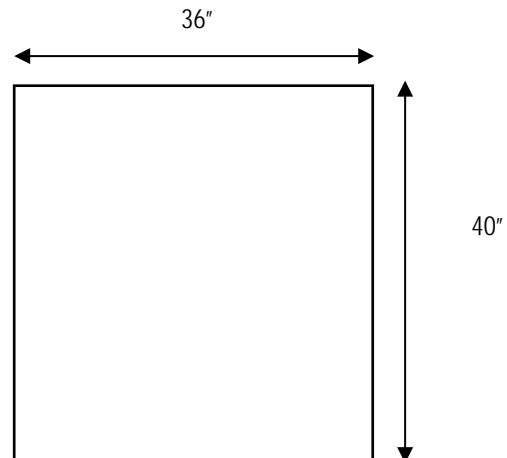
Size: 36" x 40"

Color: White with Duck Print

Weight: 0.47 lbs.

Material: 100% Cotton

QUALITY CONTROL STANDARD	
Acceptable	Unacceptable
	<ul style="list-style-type: none">• Stains or holes• Discoloration• Accordion wrinkles• Any foreign tape or textured items attached





CENTRAL OHIO MEDICAL TEXTILES

STANDARD LINEN CATALOG

CATALOG NO(S).: **3160**

ITEM NAME: **Baby Snap Shirt**

Item Details / Description

- All edges must be finished
- Use shrink-resistant thread
- Manufacturer's label to be attached
- Two needle construction – reversible
- Mitten cuffs



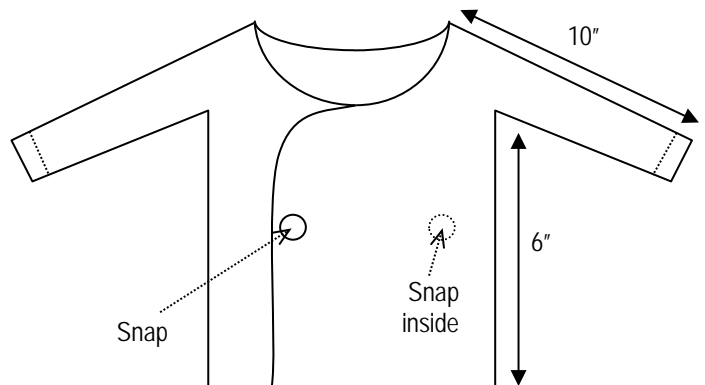
Size: 6 month

Color: White

Weight: 0.11 lbs.

Material: Polyester/Cotton Blend

QUALITY CONTROL STANDARD	
Acceptable	Unacceptable
	<ul style="list-style-type: none">• All snaps must be in working order and ties must be able to be tied• Any foreign tape or textured items attached• Discoloration• Stains or holes• No tears



STANDARD LINEN CATALOG

CATALOG NO(S).: **3170**

ITEM NAME: **Baby Burpee**

Item Details / Description

- Bias bound edging
- Manufacturer's label to be attached



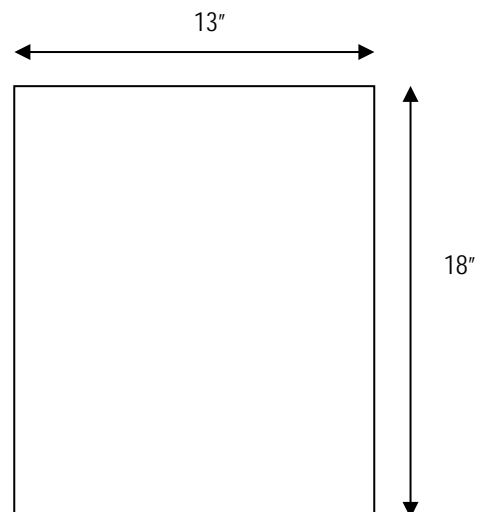
Size: 13" x 18"

Color: White

Weight: 0.10 lbs.

Material: 100% Cotton

QUALITY CONTROL STANDARD	
Acceptable	Unacceptable
	<ul style="list-style-type: none">• Stains or holes• Discoloration• Any foreign tape or textured items attached





CENTRAL OHIO MEDICAL TEXTILES

STANDARD LINEN CATALOG

CATALOG NO(S).: **3181, 3182, 3183**

ITEM NAME: **Pediatric IV Gown**

Item Details / Description

- All edges must be finished
- Use shrink-resistant thread
- Manufacturer's label to be attached
- Neck tie – self material forming one continuous piece including neck band; one set of 12" ties at neck
- One set of ties at waist – 12"



Size: 3181 – Size 2-4

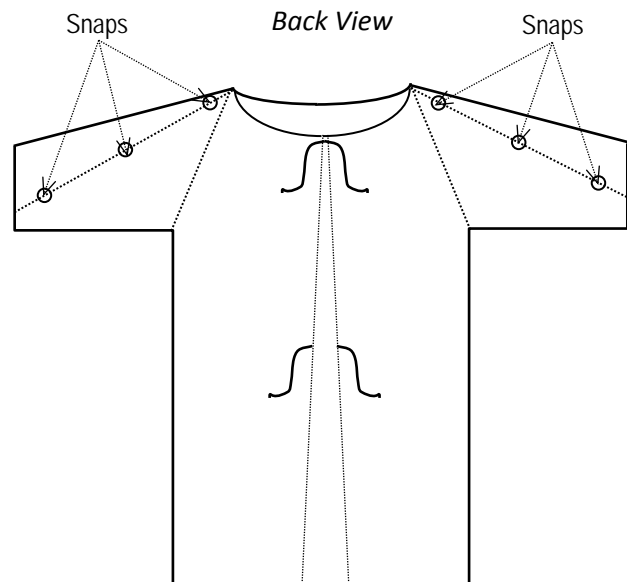
3182 – Size 4-6

3183 – Size 6-8

Color: Patterned with color coding to identify sizing

Weight: 0.20 lbs.

Material: 100% Poly-Childguard



QUALITY CONTROL STANDARD	
Acceptable	Unacceptable
	<ul style="list-style-type: none">• All snaps must be in working order• Ties are to be no less than eight inches• Any foreign tape or textured items attached• Discoloration• Stains or holes• Accordion wrinkles

STANDARD LINEN CATALOG

CATALOG NO(S): **3200**

ITEM NAME: **Teen IV Gown**

Item Details / Description

- All edges must be finished
- Use shrink-resistant thread
- Manufacturer's label to be attached
- Two needle construction; reversible
- Deep raglan sleeves (neckline to bottom of armhole – 9")
- Neck tie – self material forming one continuous piece including neck band; one set of ties at neck – 12"
- One set of ties at waist – 12"



Size: Shoulder (Sleeve to Sleeve) – 16"

Center Front to Bottom Hem – 20"

Under Arm to Bottom Hem – 14"

Neck Opening – 4.5"

Armhole Depth (Min.) – 7"

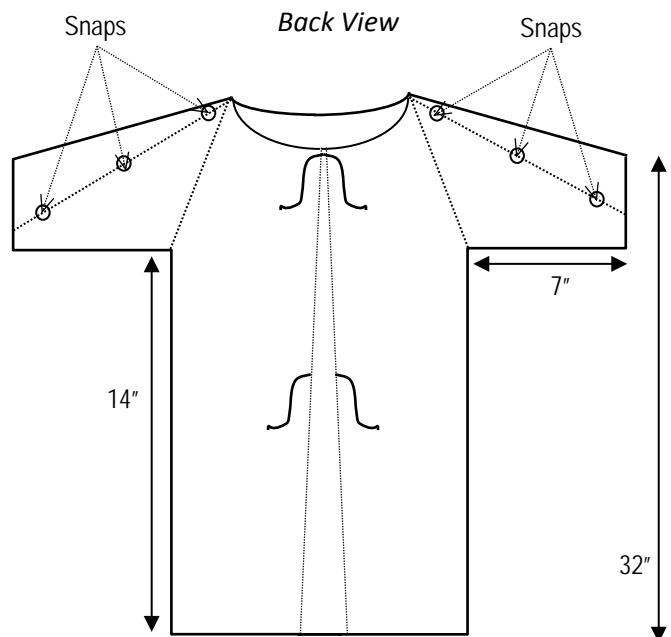
Sweep (Min.) – 35"

Color: Patterned

Weight: 0.20 lbs.

Material: P.C. 3 – 50% Polyester, 50% Cotton

Thread Count: Warp 1-2 = Weft 62



QUALITY CONTROL STANDARD	
Acceptable	Unacceptable
	<ul style="list-style-type: none"> • All snaps must be in working order • Ties are to be no less than eight inches • Any foreign tape or textured items attached • Discoloration • Stains or holes • Accordion wrinkles



CENTRAL OHIO MEDICAL TEXTILES

STANDARD LINEN CATALOG

CATALOG NO(S): **3201**

ITEM NAME: **Teen Patient Gown**

Item Details / Description

- All edges must be finished
- Use shrink-resistant thread
- Manufacturer's label to be attached
- Self neck binding with self ties at neck and waist; golf sleeve design



Size: Medium

Length – 36"

Sweep – 48"

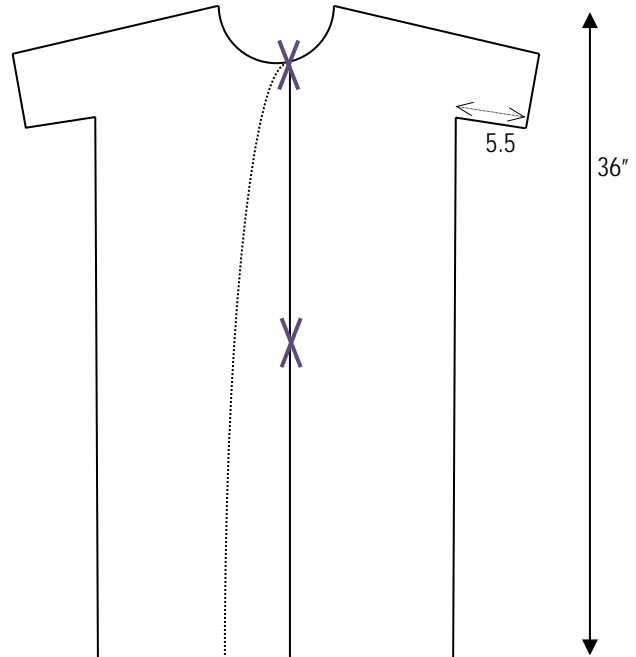
Inseam – 5.5"

Color: Solid Blue

Weight: 0.20 lbs.

Material: 100% Woven Poly ChildGuard
FR fabric

X - Shows placement of ties



QUALITY CONTROL STANDARD	
Acceptable	Unacceptable
	<ul style="list-style-type: none">• All snaps must be in working order• Ties are to be no less than eight inches• Any foreign tape or textured items attached• Discoloration• Stains or holes• Accordion wrinkles

STANDARD LINEN CATALOG

CATALOG NO(S).: **3300, 3301**

ITEM NAME: **Sleep Sack**

Item Details / Description

- All edges must be finished
- Use shrink-resistant thread
- Manufacturer's label to be attached



Size: Preemie – fits 14"-19", birth to 5 lbs.

Small – fits 23"-26", 10-18 lbs.

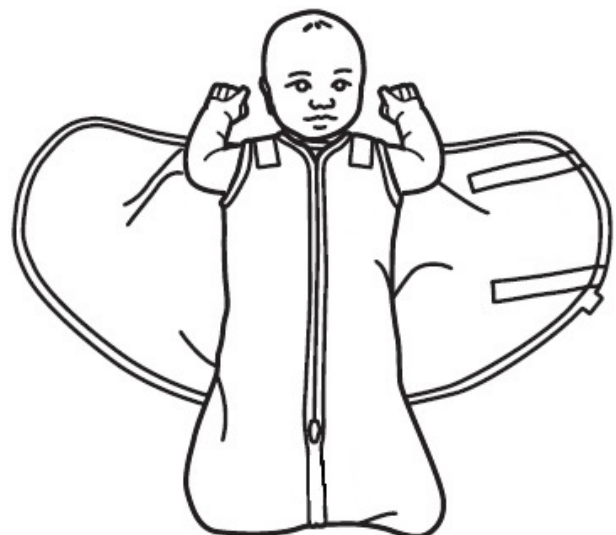
Color: Preemie – Sage

Small - Cream

Weight: Preemie – 0.4410 lbs.

Small – 0.4417 lbs.

Material: 100% Cotton



QUALITY CONTROL STANDARD	
Acceptable	Unacceptable
	<ul style="list-style-type: none"> • All snaps must be in working order • Any foreign tape or textured items attached • Discoloration • Stains or holes • No tears



CENTRAL OHIO MEDICAL TEXTILES

STANDARD LINEN CATALOG

O.R. LINEN

<i>Item No.</i>	<i>Item Name</i>	<i>Item No.</i>	<i>Item Name</i>
5010	18" O.R. Wrapper	5503	Shirt, Scrub M
5020	24" O.R. Wrapper	5504	Shirt, Scrub L
5060	Towel, O.R. White	5505	Shirt, Scrub XL
5080	Sheet, Draw	5506	Shirt, Scrub XXL
5100	Sheet, Circumcision	5507	Shirt, Scrub XXXL
5110	Drape, Wound	5508	Shirt, Scrub XXXXL
5120	Drape, Single	5509	Shirt, Scrub XXXXXL
5200	Level 3 Gown, S	5601	Pants, Scrub XS
5201	Level 3 Gown, L	5602	Pants, Scrub S
5203	Level 4 Gown, S	5603	Pants, Scrub M
5204	Level 4 Gown, L/XL	5604	Pants, Scrub L
5205	Level 4 Gown, XXL/XXXL	5605	Pants, Scrub XL
5206	Level 3 Gown, XL	5606	Pants, Scrub XXL
5207	Level 3 Gown, XXXL	5607	Pants, Scrub XXXL
5250	Yellow Isolation Gown	5608	Pants, Scrub XXXXL
5304	Towel, O.R. Green	5609	Pants, Scrub XXXXXL
5401	30" O.R. Wrapper	6010	Hamper Bag, White - Surgical
5403	45" O.R. Wrapper	6040	Hamper Bag, Green
5501	Shirt, Scrub XS	6602	Warm-Up Jacket, Medium
5502	Shirt, Scrub S	6604	Warm-Up Jacket, XL
		6606	Warm-Up Jacket, XXXL



CENTRAL OHIO MEDICAL TEXTILES

STANDARD LINEN CATALOG

CATALOG NO(S).: **5010, 5020, 5401, 5403**

ITEM NAME: **O.R. Wrapper**

Item Details / Description

- Do not cross stitch
- Use shrink-resistant thread
- All edges to be finished; color-coded per size
- Manufacturer's label to be attached
- Double thickness, to be matched for equal shrinkage
- 2-ply domestic material



Size: 5010 - 18" x 18" – red edge stitching

5020 - 24" x 24" – green edge stitching

5401 - 30" x 30" – pink edge stitching

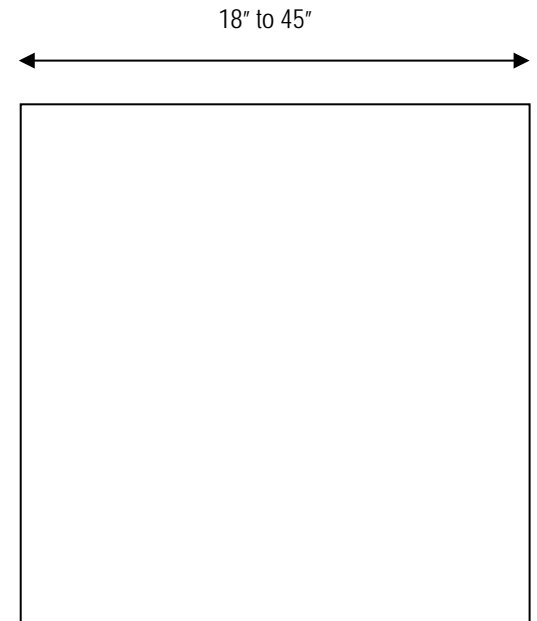
5403 - 45" x 45" – white edge stitching

Fabric Color: Misty

Weight Range: .1450 - .38 lbs.

Material: Polyester/Cotton 50/50

Thread Count: Min. 180 tpi



QUALITY CONTROL STANDARD	
Acceptable	Unacceptable
	<ul style="list-style-type: none">• Any foreign tape or textured items attached• Discoloration• Stains or holes• Accordion wrinkles• Hems may not be loose or torn• Lint on linen is not acceptable



CENTRAL OHIO MEDICAL TEXTILES

STANDARD LINEN CATALOG

CATALOG NO(S): **5060**

ITEM NAME: **O.R. White Towel**

Item Details / Description

- All edges must be finished
- Use shrink-resistant thread

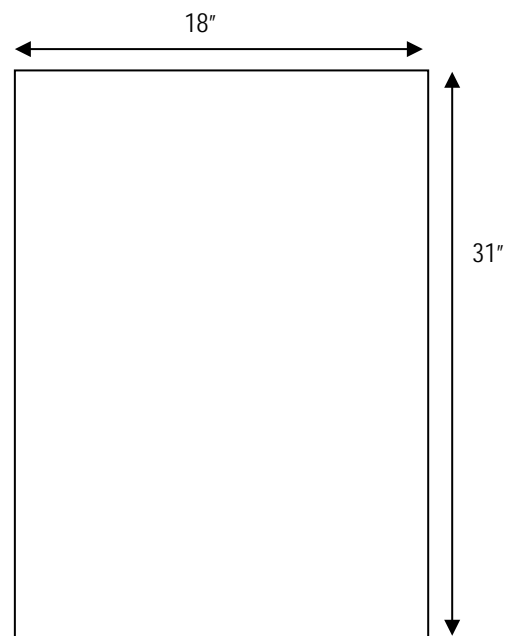


Size: 18" x 31"

Color: White

Weight: 0.18 lbs.

Material: 100% Cotton



QUALITY CONTROL STANDARD	
Acceptable	Unacceptable
	<ul style="list-style-type: none">• Any foreign tape or textured items attached• Discoloration• Stains or holes• Accordion wrinkles• Hems may not be loose or torn• Lint on linen is not acceptable



CENTRAL OHIO MEDICAL TEXTILES

STANDARD LINEN CATALOG

CATALOG NO(S): **5080**

ITEM NAME: **Draw Sheet**

Item Details / Description

- All edges must be finished
- Use shrink-resistant thread
- Manufacturer's label to be attached
- 1" hem

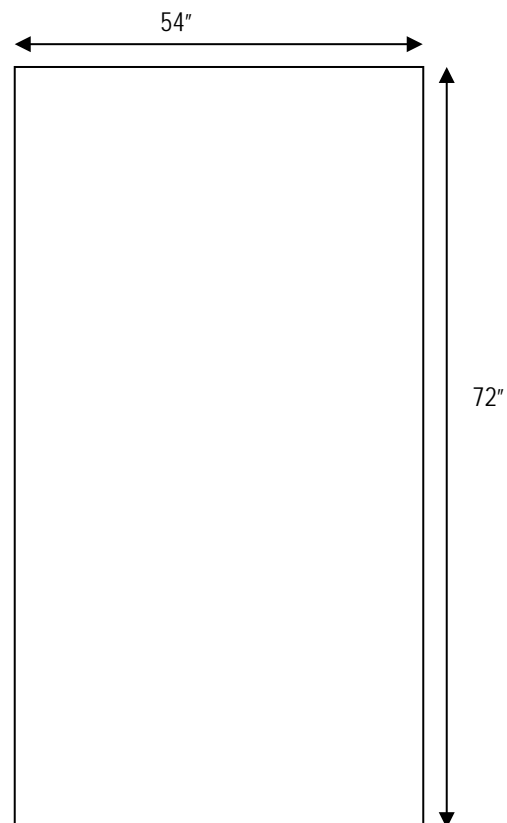
Size: 54" x 72"

Color: White

Weight: 0.6 lbs.

Material: Polyester/Cotton 45/55

Thread Count: T130



STANDARD LINEN CATALOG

CATALOG NO(S): **5100**

ITEM NAME: **Circumcision Sheet**

Item Details / Description

- All edges must be finished
- Use shrink-resistant thread
- Manufacturer's label to be attached
- 1.25" diameter fenestration – round
- 4" double thickness around fenestration



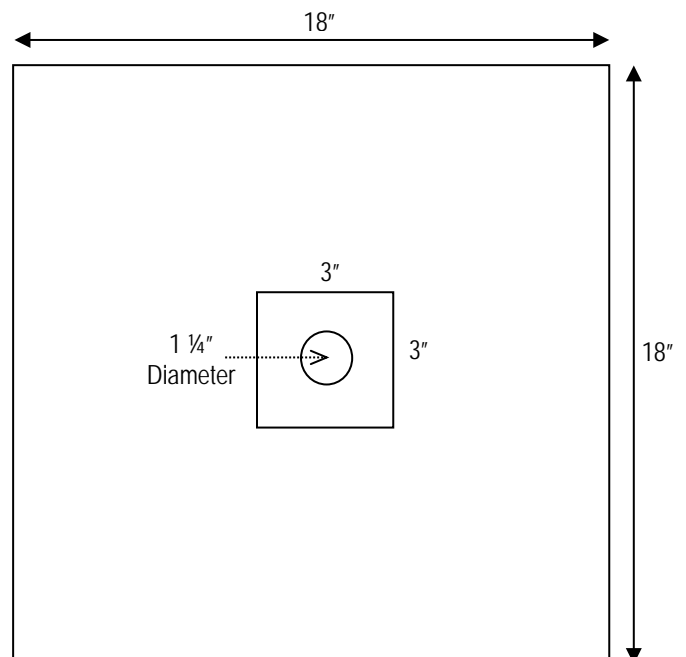
Size: 18" x 18"

Color: Ciel Blue

Weight: 0.12 lbs.

Material: Polytwill/Cotton 50/50

Thread Count: Min. 180 tpi



STANDARD LINEN CATALOG

CATALOG NO(S): **5110**

ITEM NAME: **Wound Drape**

Item Details / Description

- All edges must be finished
- Use shrink-resistant thread
- Manufacturer's label to be attached
- Single thickness with 4" x 4" centered fenestration
- Double material 3.5" x 2" around fenestration

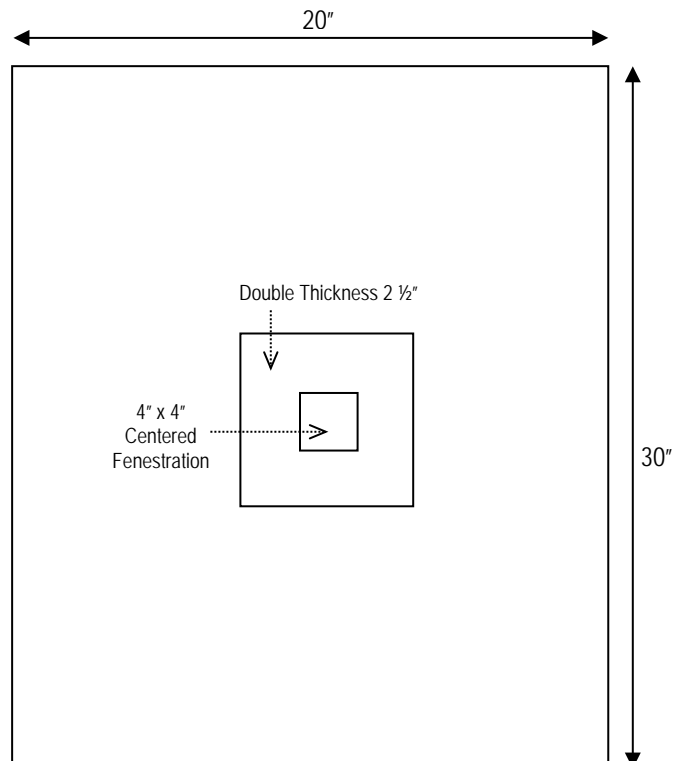
Size: 20" x 30"

Color: Misty Green

Weight: 0.23 lbs.

Material: Polyester/Cotton 50/50

Thread Count: Min. 130 tpi



STANDARD LINEN CATALOG

CATALOG NO(S).: **5120**

ITEM NAME: **Single Drape**

Item Details / Description

- All edges must be finished
- Use shrink-resistant thread
- Manufacturer's label to be attached
- Do not cross stitch
- Double thickness to be matched for equal shrinkage
- 2-ply domestic material



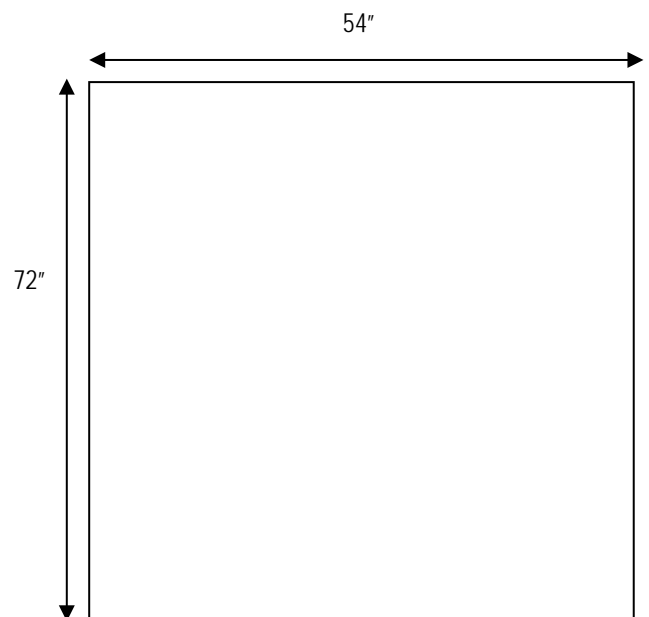
Size: 54" x 72"

Color: Misty

Weight: 1.25 lbs.

Material: Polyester/Cotton 50/50

Thread Count: Min. 180 tpi





CENTRAL OHIO MEDICAL TEXTILES

STANDARD LINEN CATALOG

CATALOG NO(S): **5200, 5201, 5206, 5207**

ITEM NAME: **Level 3 Gown**

Item Details / Description

- Liquid-resistant surgical gown, zone protection in critical areas of front panel and sleeves
- Lightweight back panels for breathability and comfort
- (4) snaps at collar
- (4) ties at waist
- Color coded collars by size



Size: 5200 – Small

5201 – Large

5206 – X-Large

5207 – XXX-Large

Color: Blue

Weight Range: .75 to 1.2 lbs.

Material: Polyester





CENTRAL OHIO MEDICAL TEXTILES

STANDARD LINEN CATALOG

CATALOG NO(S).: **5203, 5204, 5205**

ITEM NAME: **Level 4 Gown**

Item Details / Description

- Liquid proof/impervious surgical gown, zone protection in critical areas of front panel and sleeves
- Lightweight back panels for breathability and comfort
- (4) snaps at collar
- (4) ties at waist
- Color coded collars by size



Size: 5203 – Small

5204 – Large/X-Large

5205 – XX-Large/XXX-Large

Color: Blue

Weight Range: 1.00 – 1.38 lbs.

Material: Polyester



STANDARD LINEN CATALOG

CATALOG NO(S): **1180, 5250**

ITEM NAME: **Cover Gown / Yellow Isolation Gown**

Item Details / Description

- All edges must be finished with shrink-resistant thread
- Manufacturer's label to be attached
- Full-length with full raglan sleeves and knitted cuffs
- Two needle construction
- Liquid resistant



Size: Large

Neck Band – 23"

Center Front to Bottom Hem – 44"

Under Arm to Bottom Hem – 33"

Under Arm to Cuff End – 23"

Sweep – 58"

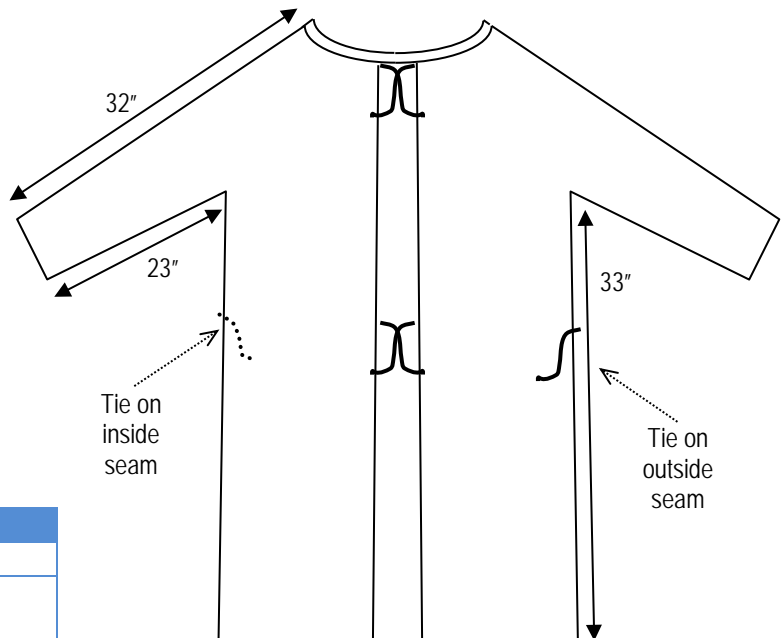
Cuff – 4"

Color: Yellow

Weight: 0.3 lbs.

Material: 99% Polyester, 1% Carbon Fiber
Calendared

Thread Count: Min. 243 tpi



QUALITY CONTROL STANDARD	
Acceptable	Unacceptable
<ul style="list-style-type: none"> • All ties must be functional; no less than eight inches 	<ul style="list-style-type: none"> • Stains or holes • Any foreign tape or textured items attached • Any discoloration

STANDARD LINEN CATALOG

CATALOG NO(S): **5304**

ITEM NAME: **O.R. Green Towel**

Item Details / Description

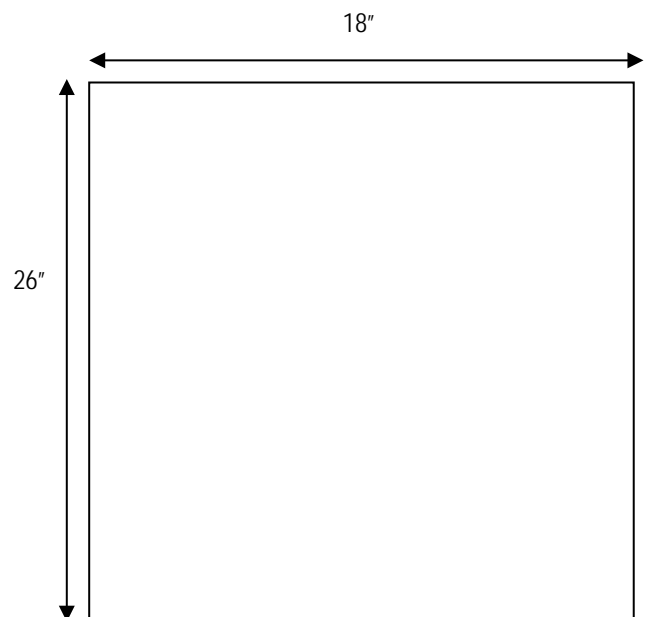
- Hemmed sides
- Low linting
- Highly absorbent surgical towel

Size: 18" x 26"

Color: Alpine Green

Weight: 0.2 lbs.

Material: 100% Cotton





CENTRAL OHIO MEDICAL TEXTILES

STANDARD LINEN CATALOG

CATALOG NO(S).: **5501 thru 5509**

ITEM NAME: **Scrub Shirt**

Item Details / Description

- Reversible
- All edges to be finished; 2 needle seams
- Manufacturer's label to be attached
- 6" x 6" chest pocket – left side and 7" x 7" cargo pocket bottom right (both inside and outside)
- Color code to size; bias trim to be placed on neck



Size: 5501 – X-Small – Baby Blue

5502 – Small – Orange

5503 – Medium – Brown

5504 – Large – Black

5505 – XL – Red

5506 – XXL – Green

5507 – XXXL – Tan / Burgundy

5508 – XXXXL – Yellow

5509 – XXXXXL – Light Green

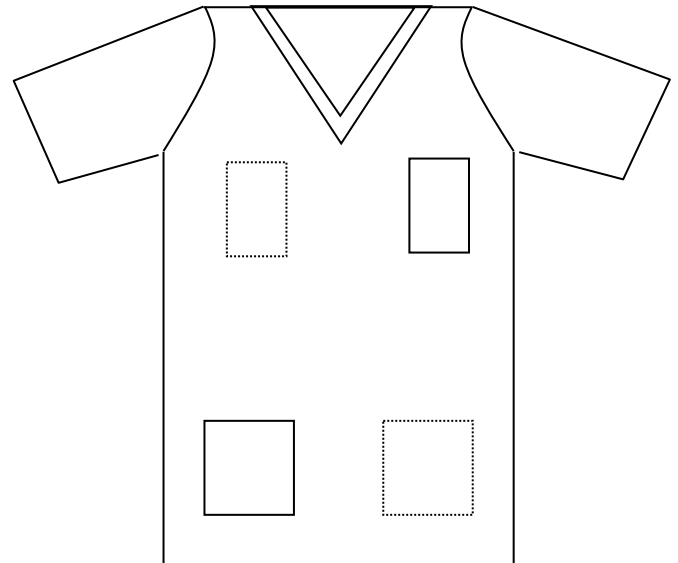
(see next page for measurements)

Color: Jade Green

Weight: 0.2 – 0.5 lbs.

Material: Polyester/Cotton 50/50

Thread Count: Min. 180 tpi



QUALITY CONTROL STANDARD

Acceptable	Unacceptable
<ul style="list-style-type: none">• Ink stains. (The scrub may be turned inside out and be worn as long as the stain cannot be seen.• Sizing must match the Standard Linen Catalog size chart.	<ul style="list-style-type: none">• Any foreign tape or textured items attached.• Discoloration• Holes• Accordion wrinkles• Lint on linen is not acceptable.• No tears or holes along pockets• Thin linen



STANDARD LINEN CATALOG

CATALOG NO(S).: **5501 thru 5509**

ITEM NAME: **Scrub Shirt**

SCRUB TOP MEASUREMENTS

Point of Measurement	XS	S	M	L	XL	2XL	3XL	4XL	5XL
Bust/Chest (set-in sleeve)	43 ½	46 ½	49 ½	52 ½	56 ½	60 ½	64 ½	68 ½	72 ½
Closed Sweep	43 ½	46 ½	49 ½	52 ½	56 ½	60 ½	64 ½	68 ½	72 ½
Across Shoulder	20	20 ¾	21 ½	22 ¼	23 ¼	24 ¼	25 ¼	26 ¼	26 5/8
Center Back Length	27	28	29	30	30 ½	31	31 ½	32	33 ½
Short Sleeve Length (set-in sleeve)	6	6 ¼	6 3/8	6 ½	6 ¾	7	7 ¼	7 ½	7 ¾
Short Sleeve Opening	16 ¼	17 1/8	18	19	20 1/8	21 ¼	22 3/8	23 ½	24 7/8
Pocket Length	7 ½	7 ½	7 ½	7 ½	7 ½	7 ½	7 ½	7 ½	7 ½
Pocket Opening/Width	7	7	7	7	7	7	7	7	7
Breast Pocket Length	6 ½	6 ½	6 ½	6 ½	6 ½	6 ½	6 ½	6 ½	6 ½
Breast Pocket Width	6	6	6	6	6	6	6	6	6
Neckline Circumference (closed)	24	25	26	27	28	29	30	31	32



CENTRAL OHIO MEDICAL TEXTILES

STANDARD LINEN CATALOG

CATALOG NO(S).: **5601 thru 5609**

ITEM NAME: **Scrub Pants**

Item Details / Description

- Reversible
- All edges to be finished; 2 needle seams
- Manufacturer's label to be attached
- Drawstring sewn in tunnel at center waist
- Hip pocket and cargo on inside and outside
- Color code to size; bias trim to be placed on tie string

Size: 5501 – X-Small – Baby Blue

5502 – Small – Orange

5503 – Medium – Brown

5504 – Large – Black

5505 – XL – Red

5506 – XXL – Green

5507 – XXXL – Tan / Burgundy

5508 – XXXXL – Yellow

5509 – XXXXXL – Light Green

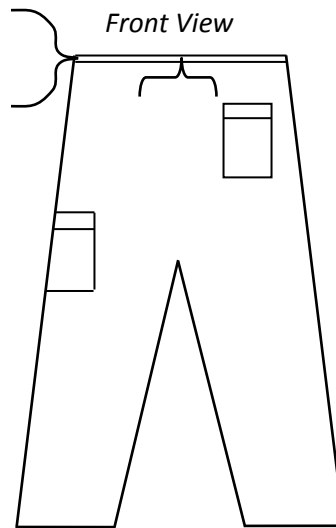
(see next page for measurements)

Color: Jade Green

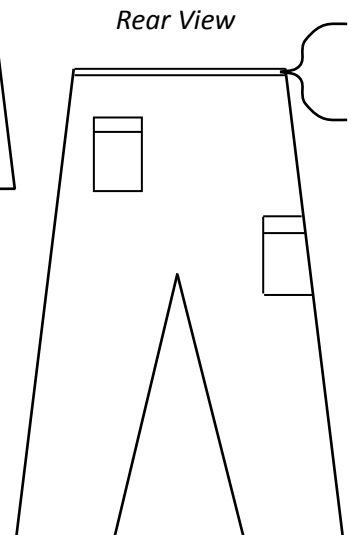
Weight: 0.3 – 0.7 lbs.

Material: Polyester/Cotton 50/50

Thread Count: Min. 180 tpi



Front View



Rear View

QUALITY CONTROL STANDARD

Acceptable	Unacceptable
<ul style="list-style-type: none">• Ink stains. (The scrub may be turned inside out and be worn as long as the stain cannot be seen.• Sizing must match the Standard Linen Catalog size chart.	<ul style="list-style-type: none">• Any foreign tape or textured items attached.• Discoloration• Holes• Accordion wrinkles• Lint on linen is not acceptable.• No tears or holes along pockets• Thin linen



STANDARD LINEN CATALOG

CATALOG NO(S).: **5601 thru 5609**

ITEM NAME: **Scrub Pants**

SCRUB PANT MEASUREMENTS

Point of Measurement	XS	S	M	L	XL	2XL	3XL	4XL	5XL
Waist, Pant	36	40	44	48	52	56	60	64	68
Hip/Seat (8 ½" down from TOB)	37 ½	41 ½	45 ½	49 ½	53 ½	57 ½	61 ½	65 ½	70
Front Rise, Top of Band	13 ½	14	14 ½	15	15 ½	16	16 ½	17	17 ¾
Back Rise, Top of Band	15 ¾	16 ¾	16 ¾	17 ¾	17 ¾	18 ¾	18 ¾	19 ¾	19 ½
Thigh	26 ¾	28 ½	30 ½	32	34 ¼	36 ½	38 ¾	41	43 ¼
Leg Opening	16 ¾	17 ¾	18 ¾	19 ¾	21 ¼	22 ¾	24 ¼	25 ¾	27 ½
Inseam	28 ¾	29 ¼	29 ¾	30 ¼	30 ¾	31 ¼	31 7/8	32 3/8	33 ¼
Cargo Pocket Length	8	8	8	8	8	8	8	8	8
Cargo Pocket Width	7	7	7	7	7	7	7	7	7
Back Pocket Length	7	7	7	7	7	7	7	7	7
Back Pocket Width	6 ½	6 ½	6 ½	6 ½	6 ½	6 ½	6 ½	6 ½	6 ½
Belt	50	54	58	62	66	70	74	78	82

STANDARD LINEN CATALOG

CATALOG NO(S): **6010**

ITEM NAME: **White Surgical Hamper Bag**

Item Details / Description

- All edges must be finished
- Use shrink-resistant thread
- Manufacturer's label to be attached
- Opening: Envelope with hood style, holding loops, flat bottom

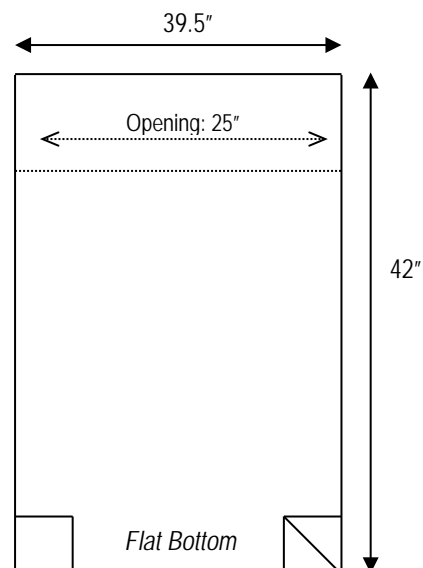
Size: 39.5" x 42"; 25" opening

Color: White

Weight: 0.70 lbs.

Material: Nylon

Thread Count: Min. 130 tpi



STANDARD LINEN CATALOG

CATALOG NO(S): **6040**

ITEM NAME: **Green Hamper Bag**

Item Details / Description

- All edges to be finished
- Use shrink-resistant thread
- Manufacturer's label to be attached
- Hood and hanging loop

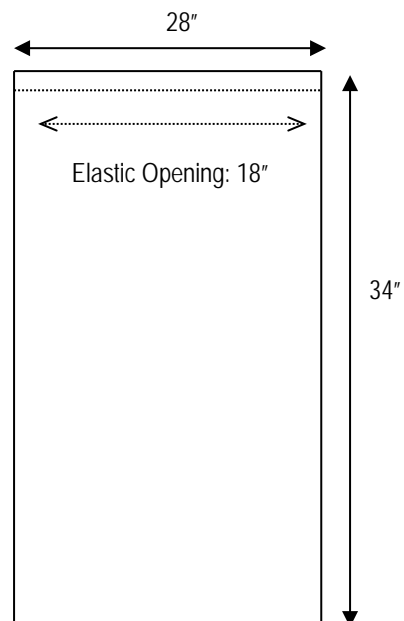
Size: 28" x 34"; 18" elastic opening

Color: Green

Weight: 0.70 lbs.

Material: Nylon

Thread Count: Min. 130 tpi





CENTRAL OHIO MEDICAL TEXTILES

STANDARD LINEN CATALOG

CATALOG NO(S).: **6602, 6604, 6606**

ITEM NAME: **Warm-Up Jacket**

Item Details / Description

- All edges must be finished
- Use shrink-resistant thread
- Manufacturer's label to be attached

Size: 6602 – Medium – Brown collar

6604 – X-Large – Red collar

6606 – XXX-Large – Burgundy collar

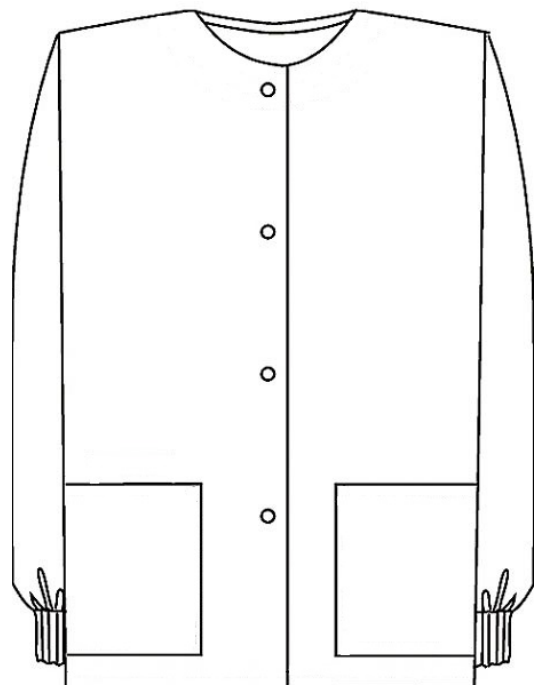
Color: Evergreen

Weight: 6602 and 6604 – 0.6694 lbs.;

6606 – 0.7022 lbs.

Material: 65% Polyester, 35% Cotton

Thread Count: Min. 180



QUALITY CONTROL STANDARD

Acceptable	Unacceptable
<ul style="list-style-type: none">• Ink stains, dime-size, on either pocket on the front of the warm-up jacket• No more than 2 ink stains on each pocket• No more than 3 quarter-size stains are acceptable on the back of the warm up jacket.	